

CORRECTIVE ACTION PLAN FOR MONITORED NATURAL ATTENUATION

UST Permit Name: JASH MANAGEMENT

UST Permit #: 9928

Date Release Reported: 8/3/2006

Project Manager: ROBERT A. DUNN

Priority Class: 2BB

County: FLORENCE

Date of Last Sampling: 6/1/2022

Contractor: ARM

Date of Assessment Activities Completed: 6/1/2022

of Sampling Events Completed: > 10

Groundwater Velocity (ft/yr): 9.77

Groundwater Flow Direction: NE

Depth to Groundwater 9.77 FEET

Soil Lithology: SAND

Distance to the Nearest Receptor 165 FEET

Type of Receptor? PRIVATE WSW

Zoning Info _____ **Estimated** Time to RBSL 2028

Is the CoC Plume Defined (Yes/No)? YES

Is the CoC Plume Stable (Yes/No)? YES

Additional Comments:

The following items are attached: Table with current CoC concentrations, Table with SSTLs, Site Map, Tax Map, Tax Map Table, Current zoning information

Project Manager: _____

Robert Dunn

Date: _____

06/13/2025

UST Facility Name:

JASH MANAGEMENT

UST Permit #:

9928

Table of CoC Concentrations in Groundwater at time of ICAP Development

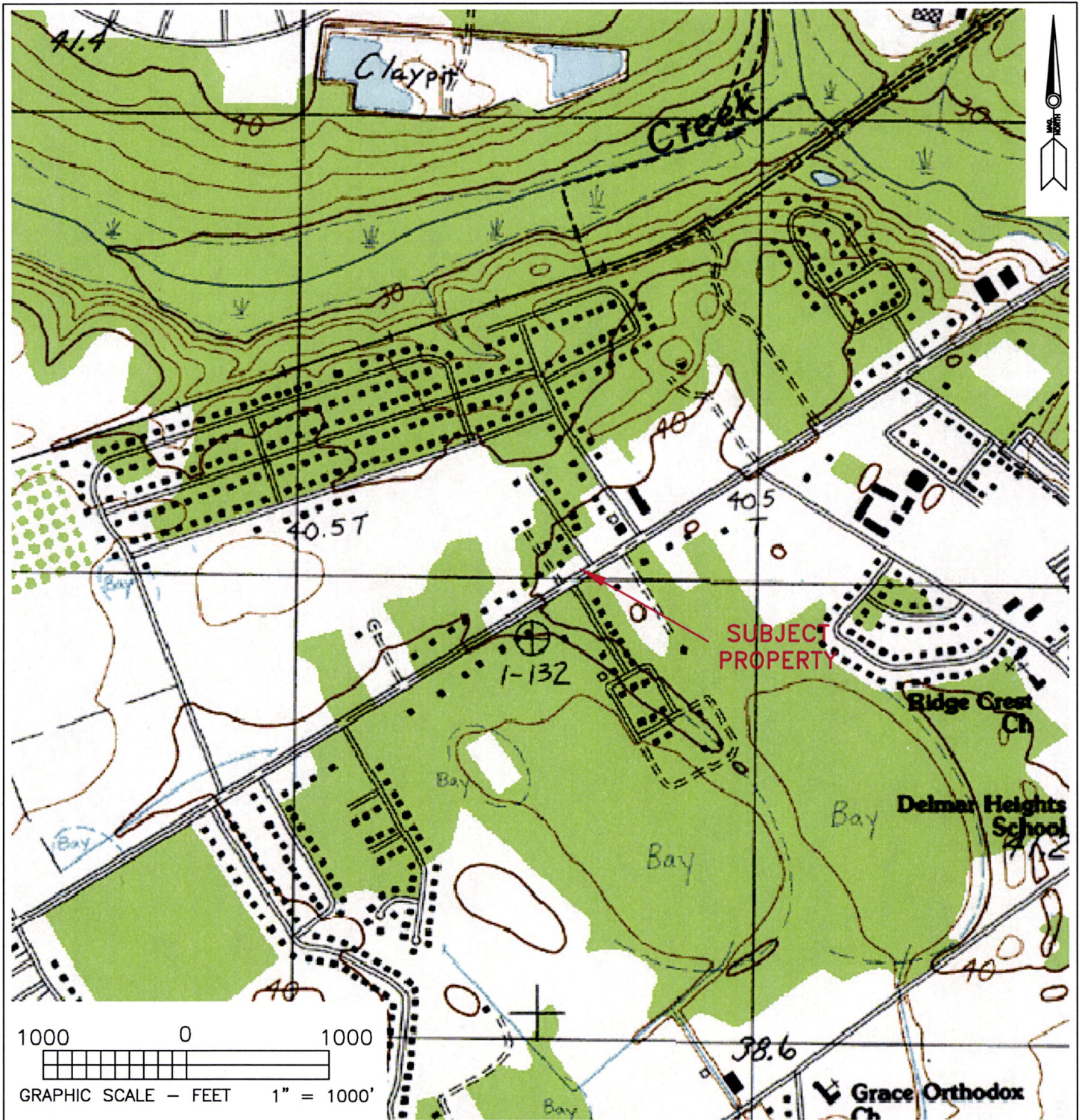
CoC concentrations in parts per billion (µg/l) based report of Groundwater Monitoring received:

[illegible]

Table of SSTLs

Site-specific target levels (SSTLs) in parts per billion (µg/l):

BOLD SSTLs equal to Effective Solubility Limits for Gasoline Constituents (UST QAPP revision 4.0, Table D7)



PROJECT:

GROUNDWATER SAMPLING ASSESSMENT
JASH MANAGEMENT, LLC
(FORMER BREAKERS #118)
2819 WEST PALMETTO STREET
FLORENCE, FLORENCE COUNTY, SC
UST PERMIT #09928

DESCRIPTION:

SITE LOCATION MAP

FIGURE 1

DATE:

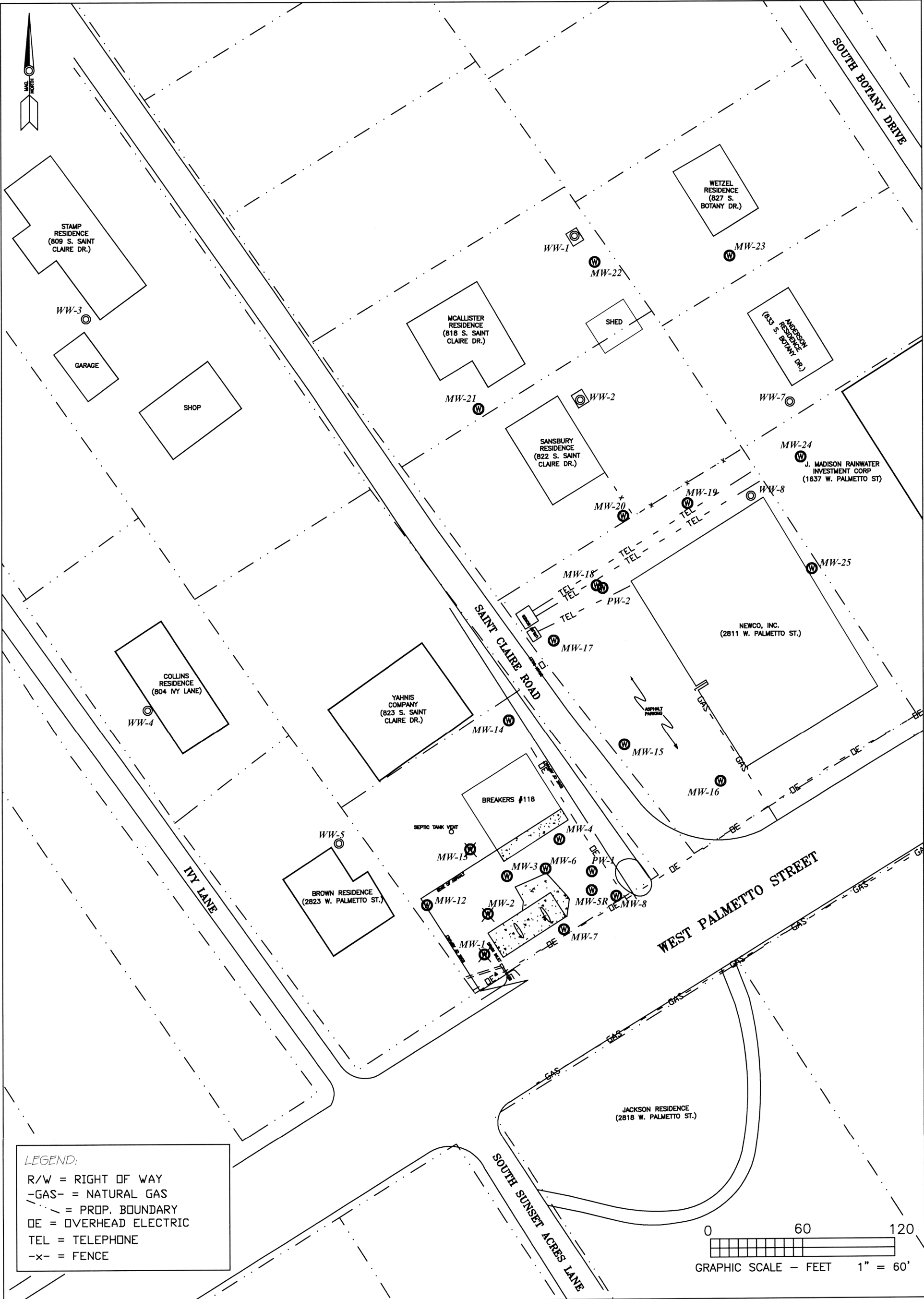
DECEMBER 2022




REFERENCE:

U.S.G.S. TOPOGRAPHIC MAP
(7.5 MINUTE SERIES)
FLORENCE WEST - 1986
SOUTH CAROLINA QUADRANGLE

LEGEND:



<p>PROJECT:</p> <p>GROUNDWATER SAMPLING ASSESSMENT JASH MANAGEMENT, LLC (FORMER BREAKERS #118) 2819 WEST PALMETTO STREET FLORENCE, FLORENCE COUNTY, SC UST PERMIT #09928</p>	<p>DESCRIPTION:</p> <p>SITE BASE MAP</p>	<p>FIGURE 2</p> <p>DATE:</p> <p>DECEMBER 2022</p>
<p> ARM ENVIRONMENTAL SERVICES</p>	<p>REFERENCE:</p>	<p>NOTES:</p> <p>⊙ = MONITORING WELL ⊗ = ABANDONED MONITORING WELL ○ = WATER SUPPLY WELL</p>

Jash Management LLC, UST Permit #09928

Table 2 – Potentiometric Data

December 21, 2022

Monitor Well ID	Date Gauged	Total Well Depth (feet bgs)	Screened Interval (feet bgs)	Top of Casing Elevation (feet)	Static Water Level (feet bgs)	Static Product Level (feet bgs)	Product Thickness (feet)	Corrected Water Level* (feet)	GW Elevation (feet)
MW-1	05/04/09	19.2	9.2 - 19.2	98.13	11.00	N/A	N/A	N/A	87.13
	04/21/14	19.2	9.2 - 19.2	98.13	8.75	N/A	N/A	N/A	89.38
	09/09/15	19.2	9.2 - 19.2	98.13	Well destroyed				
MW-2	05/04/09	19.2	9.2 - 19.2	98.40	11.32	N/A	N/A	N/A	87.08
	04/21/14	19.2	9.2 - 19.2	98.40	9.18	N/A	N/A	N/A	89.22
	09/09/15	19.2	9.2 - 19.2	98.40	13.34	N/A	N/A	N/A	85.06
	07/20/17	19.2	9.2 - 19.2	98.40	11.15	N/A	N/A	N/A	87.25
	01/17/18	19.2	9.2 - 19.2	98.40	12.34	N/A	N/A	N/A	86.06
	05/04/20	19.2	9.2 - 19.2	98.40	9.63	N/A	N/A	N/A	88.77
	11/20/20	19.2	9.2 - 19.2	98.40	10.04	N/A	N/A	N/A	88.36
	07/28/21	19.2	9.2 - 19.2	98.40	11.37	N/A	N/A	N/A	87.03
	12/13/21	19.2	9.2 - 19.2	98.40	Well not requested to be sampled				
	06/06/22	19.2	9.2 - 19.2	98.40	Well destroyed				
MW-3	05/04/09	18.7	8.7 - 18.7	98.87	12.88	N/A	N/A	N/A	85.99
	04/21/14	18.7	8.7 - 18.7	98.87	9.74	N/A	N/A	N/A	89.13
	09/09/15	18.7	8.7 - 18.7	98.87	13.73	N/A	N/A	N/A	85.14
	07/20/17	18.7	8.7 - 18.7	98.87	11.66	N/A	N/A	N/A	87.21
	01/17/18	18.7	8.7 - 18.7	98.87	12.74	N/A	N/A	N/A	86.13
	05/04/20	18.7	8.7 - 18.7	98.87	10.04	N/A	N/A	N/A	88.83
	11/20/20	18.7	8.7 - 18.7	98.87	10.47	N/A	N/A	N/A	88.40
	07/28/21	18.7	8.7 - 18.7	98.87	11.82	N/A	N/A	N/A	87.05
	12/13/21	18.7	8.7 - 18.7	98.87	Well not requested to be sampled				
	06/06/22	18.7	8.7 - 18.7	98.87	13.05	N/A	N/A	N/A	85.82
	12/21/22	18.7	8.7 - 18.7	98.87	Well not requested to be sampled				

Note: Corrected WL = Static WL - (Product Thickness x Product Gravity)

N/A - Not Applicable

Jash Management LLC, UST Permit #09928

Table 2 – Potentiometric Data

December 21, 2022

Monitor Well ID	Date Gauged	Total Well Depth (feet bgs)	Screened Interval (feet bgs)	Top of Casing Elevation (feet)	Static Water Level (feet bgs)	Static Product Level (feet bgs)	Product Thickness (feet)	Corrected Water Level* (feet)	GW Elevation (feet)
MW-4	05/04/09	19.0	9.0 - 19.0	99.02	12.07	N/A	N/A	N/A	86.95
	04/21/14	19.0	9.0 - 19.0	99.02	9.98	N/A	N/A	N/A	89.04
	09/09/15	19.0	9.0 - 19.0	99.02	14.07	N/A	N/A	N/A	84.95
	07/20/17	19.0	9.0 - 19.0	99.02	11.90	N/A	N/A	N/A	87.12
	01/17/18	19.0	9.0 - 19.0	99.02	13.03	N/A	N/A	N/A	85.99
	05/04/20	19.0	9.0 - 19.0	99.02	10.39	N/A	N/A	N/A	88.63
	11/20/20	19.0	9.0 - 19.0	99.02	10.83	N/A	N/A	N/A	88.19
	07/28/21	19.0	9.0 - 19.0	99.02	12.23	N/A	N/A	N/A	86.79
	12/13/21	19.0	9.0 - 19.0	99.02	13.74	N/A	N/A	N/A	85.28
	06/06/22	19.0	9.0 - 19.0	99.02	13.56	N/A	N/A	N/A	85.46
	12/21/22	19.0	9.0 - 19.0	99.02	13.73	N/A	N/A	N/A	85.29
MW-5	05/04/09	19.0	9.0 - 19.0	98.71	11.83	11.69	0.14	11.59	87.12
	04/21/14	19.0	9.0 - 19.0	98.71	Well not gauged - blocked @ 4.5 feet bgs				
	09/18/14	19.0	9.0 - 19.0	98.71	Well abandoned				
MW-5R	09/18/14	19.0	9.0 - 19.0	98.59	12.92	N/A	N/A	N/A	85.67
	09/09/15	19.0	9.0 - 19.0	98.59	13.57	13.56	0.01	13.56	85.03
	07/20/17	19.0	9.0 - 19.0	98.59	11.42	N/A	N/A	N/A	87.17
	01/17/18	19.0	9.0 - 19.0	98.59	12.54	N/A	N/A	N/A	86.05
	05/04/20	19.0	9.0 - 19.0	98.59	9.89	N/A	N/A	N/A	88.70
	11/20/20	19.0	9.0 - 19.0	98.59	10.33	N/A	N/A	N/A	88.26
	07/28/21	19.0	9.0 - 19.0	98.59	11.63	N/A	N/A	N/A	86.96
	12/13/21	19.0	9.0 - 19.0	98.59	13.25	N/A	N/A	N/A	85.34
	06/06/22	19.0	9.0 - 19.0	98.59	12.90	N/A	N/A	N/A	85.69
	12/21/22	19.0	9.0 - 19.0	98.59	13.25	N/A	N/A	N/A	85.34

Note: Corrected WL = Static WL - (Product Thickness x Product Gravity)

N/A - Not Applicable

Jash Management LLC, UST Permit #09928

Table 2 – Potentiometric Data

December 21, 2022

Monitor Well ID	Date Gauged	Total Well Depth (feet bgs)	Screened Interval (feet bgs)	Top of Casing Elevation (feet)	Static Water Level (feet bgs)	Static Product Level (feet bgs)	Product Thickness (feet)	Corrected Water Level* (feet)	GW Elevation (feet)
MW-6	05/04/09	18.0	8.0 - 18.0	98.90	11.90	N/A	N/A	N/A	87.00
	04/21/14	18.0	8.0 - 18.0	98.90	9.79	N/A	N/A	N/A	89.11
	09/09/15	18.0	8.0 - 18.0	98.90	13.80	N/A	N/A	N/A	85.10
	07/20/17	18.0	8.0 - 18.0	98.90	11.61	N/A	N/A	N/A	87.29
	01/17/18	18.0	8.0 - 18.0	98.90	12.77	N/A	N/A	N/A	86.13
	05/04/20	18.0	8.0 - 18.0	98.90	10.10	N/A	N/A	N/A	88.80
	11/20/20	18.0	8.0 - 18.0	98.90	10.55	N/A	N/A	N/A	88.35
	07/28/21	18.0	8.0 - 18.0	98.90	11.84	N/A	N/A	N/A	87.06
	12/13/21	18.0	8.0 - 18.0	98.90	13.40	N/A	N/A	N/A	85.50
	06/06/22	18.0	8.0 - 18.0	98.90	13.13	N/A	N/A	N/A	85.77
	12/21/22	18.0	8.0 - 18.0	98.90	13.46	N/A	N/A	N/A	85.44
MW-7	05/04/09	18.0	8.0 - 18.0	98.79	11.75	N/A	N/A	N/A	87.04
	04/21/14	18.0	8.0 - 18.0	98.79	9.59	N/A	N/A	N/A	89.20
	09/09/15	18.0	8.0 - 18.0	98.79	13.75	N/A	N/A	N/A	85.04
	07/20/17	18.0	8.0 - 18.0	98.79	11.56	N/A	N/A	N/A	87.23
	01/17/18	18.0	8.0 - 18.0	98.79	12.73	N/A	N/A	N/A	86.06
	05/04/20	18.0	8.0 - 18.0	98.79	10.07	N/A	N/A	N/A	88.72
	11/20/20	18.0	8.0 - 18.0	98.79	10.48	N/A	N/A	N/A	88.31
	07/28/21	18.0	8.0 - 18.0	98.79	11.82	N/A	N/A	N/A	86.97
	12/13/21	18.0	8.0 - 18.0	98.79	Well not requested to be sampled				
	06/06/22	18.0	8.0 - 18.0	98.79	Well not sampled - unable to open well				
	12/21/22	18.0	8.0 - 18.0	98.79	Well not requested to be sampled				

Note: Corrected WL = Static WL - (Product Thickness x Product Gravity)

N/A - Not Applicable

Jash Management LLC, UST Permit #09928

Table 2 – Potentiometric Data

December 21, 2022

Monitor Well ID	Date Gauged	Total Well Depth (feet bgs)	Screened Interval (feet bgs)	Top of Casing Elevation (feet)	Static Water Level (feet bgs)	Static Product Level (feet bgs)	Product Thickness (feet)	Corrected Water Level* (feet)	GW Elevation (feet)
MW-8	05/04/09	18.0	8.0 - 18.0	99.13	12.20	N/A	N/A	N/A	86.93
	04/21/14	18.0	8.0 - 18.0	99.13	10.10	N/A	N/A	N/A	89.03
	09/09/15	18.0	8.0 - 18.0	99.13	14.15	N/A	N/A	N/A	84.98
	07/20/17	18.0	8.0 - 18.0	99.13	12.06	N/A	N/A	N/A	87.07
	01/17/18	18.0	8.0 - 18.0	99.13	13.17	N/A	N/A	N/A	85.96
	05/04/20	18.0	8.0 - 18.0	99.13	Well not located - possibly paved over				
	11/20/20	18.0	8.0 - 18.0	99.13	Well not located - possibly paved over				
	07/28/21	18.0	8.0 - 18.0	99.13	11.57	N/A	N/A	N/A	87.56
	12/13/21	18.0	8.0 - 18.0	99.13	Well not requested to be sampled				
	06/06/22	18.0	8.0 - 18.0	99.13	13.80	N/A	N/A	N/A	85.33
	12/21/22	18.0	8.0 - 18.0	99.13	Well not requested to be sampled				
MW-12	05/04/09	18.0	8.0 - 18.0	98.85	11.74	N/A	N/A	N/A	87.11
	04/21/14	18.0	8.0 - 18.0	98.85	9.50	N/A	N/A	N/A	89.35
	09/09/15	18.0	8.0 - 18.0	98.85	13.74	N/A	N/A	N/A	85.11
	07/20/17	18.0	8.0 - 18.0	98.85	11.62	N/A	N/A	N/A	87.23
	01/17/18	18.0	8.0 - 18.0	98.85	12.77	N/A	N/A	N/A	86.08
	05/04/20	18.0	8.0 - 18.0	98.85	10.04	N/A	N/A	N/A	88.81
	11/20/20	18.0	8.0 - 18.0	98.85	10.98	N/A	N/A	N/A	87.87
	07/28/21	18.0	8.0 - 18.0	98.85	11.84	N/A	N/A	N/A	87.01
	12/13/21	18.0	8.0 - 18.0	98.85	Well not requested to be sampled				
	06/06/22	18.0	8.0 - 18.0	98.85	13.09	N/A	N/A	N/A	85.76
	12/21/22	18.0	8.0 - 18.0	98.85	Well not requested to be sampled				

Note: Corrected WL = Static WL - (Product Thickness x Product Gravity)

N/A - Not Applicable

Jash Management LLC, UST Permit #09928

Table 2 – Potentiometric Data

December 21, 2022

Monitor Well ID	Date Gauged	Total Well Depth (feet bgs)	Screened Interval (feet bgs)	Top of Casing Elevation (feet)	Static Water Level (feet bgs)	Static Product Level (feet bgs)	Product Thickness (feet)	Corrected Water Level* (feet)	GW Elevation (feet)
MW-13	05/04/09	18.0	8.0 - 18.0	98.88	11.84	N/A	N/A	N/A	87.04
	04/21/14	18.0	8.0 - 18.0	98.88	9.69	N/A	N/A	N/A	89.19
	09/09/15	18.0	8.0 - 18.0	98.88	13.87	N/A	N/A	N/A	85.01
	07/20/17	18.0	8.0 - 18.0	98.88	11.72	N/A	N/A	N/A	87.16
	01/17/18	18.0	8.0 - 18.0	98.88	12.86	N/A	N/A	N/A	86.02
	05/04/20	18.0	8.0 - 18.0	98.88	Well abandoned				
MW-14	05/04/09	18.0	8.0 - 18.0	99.52	12.60	N/A	N/A	N/A	86.92
	04/21/14	18.0	8.0 - 18.0	99.52	10.52	N/A	N/A	N/A	89.00
	09/09/15	18.0	8.0 - 18.0	99.52	14.61	N/A	N/A	N/A	84.91
	07/20/17	18.0	8.0 - 18.0	99.52	12.41	N/A	N/A	N/A	87.11
	01/17/18	18.0	8.0 - 18.0	99.52	13.23	N/A	N/A	N/A	86.29
	05/04/20	18.0	8.0 - 18.0	99.52	10.86	N/A	N/A	N/A	88.66
	11/20/20	18.0	8.0 - 18.0	99.52	10.33	N/A	N/A	N/A	89.19
	07/28/21	18.0	8.0 - 18.0	99.52	12.67	N/A	N/A	N/A	86.85
	12/13/21	18.0	8.0 - 18.0	99.52	Well not requested to be sampled				
	06/06/22	18.0	8.0 - 18.0	99.52	13.91	N/A	N/A	N/A	85.61
	12/21/22	18.0	8.0 - 18.0	99.52	Well not requested to be sampled				

Note: Corrected WL = Static WL - (Product Thickness x Product Gravity)

N/A - Not Applicable

Jash Management LLC, UST Permit #09928

Table 2 – Potentiometric Data

December 21, 2022

Monitor Well ID	Date Gauged	Total Well Depth (feet bgs)	Screened Interval (feet bgs)	Top of Casing Elevation (feet)	Static Water Level (feet bgs)	Static Product Level (feet bgs)	Product Thickness (feet)	Corrected Water Level* (feet)	GW Elevation (feet)
MW-15	05/04/09	18.0	8.0 - 18.0	98.82	12.05	N/A	N/A	N/A	86.77
	04/21/14	18.0	8.0 - 18.0	98.82	10.00	N/A	N/A	N/A	88.82
	09/09/15	18.0	8.0 - 18.0	98.82	13.90	N/A	N/A	N/A	84.92
	07/20/17	18.0	8.0 - 18.0	98.82	11.78	N/A	N/A	N/A	87.04
	01/17/18	18.0	8.0 - 18.0	98.82	13.04	N/A	N/A	N/A	85.78
	05/04/20	18.0	8.0 - 18.0	98.82	10.30	N/A	N/A	N/A	88.52
	11/20/20	18.0	8.0 - 18.0	98.82	10.80	N/A	N/A	N/A	88.02
	07/28/21	18.0	8.0 - 18.0	98.82	11.12	N/A	N/A	N/A	87.70
	12/13/21	18.0	8.0 - 18.0	98.82	13.70	N/A	N/A	N/A	85.12
	06/06/22	18.0	8.0 - 18.0	98.82	13.29	N/A	N/A	N/A	85.53
	12/21/22	18.0	8.0 - 18.0	98.82	13.67	N/A	N/A	N/A	85.15
MW-16	05/04/09	18.0	8.0 - 18.0	97.91	11.10	N/A	N/A	N/A	86.81
	04/21/14	18.0	8.0 - 18.0	97.91	8.95	N/A	N/A	N/A	88.96
	09/09/15	18.0	8.0 - 18.0	97.91	12.91	N/A	N/A	N/A	85.00
	07/20/17	18.0	8.0 - 18.0	97.91	Well not sampled - covered by car				
	01/17/18	18.0	8.0 - 18.0	97.91	12.03	N/A	N/A	N/A	85.88
	05/04/20	18.0	8.0 - 18.0	97.91	9.38	N/A	N/A	N/A	88.53
	11/20/20	18.0	8.0 - 18.0	97.91	9.77	N/A	N/A	N/A	88.14
	07/28/21	18.0	8.0 - 18.0	97.91	12.16	N/A	N/A	N/A	85.75
	12/13/21	18.0	8.0 - 18.0	97.91	Well not requested to be sampled				
	06/06/22	18.0	8.0 - 18.0	97.91	12.33	N/A	N/A	N/A	85.58
	12/21/22	18.0	8.0 - 18.0	97.91	Well not requested to be sampled				

Note: Corrected WL = Static WL - (Product Thickness x Product Gravity)

N/A - Not Applicable

Jash Management LLC, UST Permit #09928

Table 2 – Potentiometric Data

December 21, 2022

Monitor Well ID	Date Gauged	Total Well Depth (feet bgs)	Screened Interval (feet bgs)	Top of Casing Elevation (feet)	Static Water Level (feet bgs)	Static Product Level (feet bgs)	Product Thickness (feet)	Corrected Water Level* (feet)	GW Elevation (feet)
MW-17	05/04/09	18.0	8.0 - 18.0	99.00	12.13	N/A	N/A	N/A	86.87
	04/21/14	18.0	8.0 - 18.0	99.00	10.17	N/A	N/A	N/A	88.83
	09/09/15	18.0	8.0 - 18.0	99.00	14.11	N/A	N/A	N/A	84.89
	07/20/17	18.0	8.0 - 18.0	99.00	12.00	N/A	N/A	N/A	87.00
	01/17/18	18.0	8.0 - 18.0	99.00	13.08	N/A	N/A	N/A	85.92
	05/04/20	18.0	8.0 - 18.0	99.00	10.41	N/A	N/A	N/A	88.59
	11/20/20	18.0	8.0 - 18.0	99.00	10.87	N/A	N/A	N/A	88.13
	07/28/21	18.0	8.0 - 18.0	99.00	12.27	N/A	N/A	N/A	86.73
	12/13/21	18.0	8.0 - 18.0	99.00	Well not requested to be sampled				
	06/06/22	18.0	8.0 - 18.0	99.00	13.45	N/A	N/A	N/A	85.55
	12/21/22	18.0	8.0 - 18.0	99.00	Well not requested to be sampled				
MW-18	05/04/09	18.0	8.0 - 18.0	98.76	11.91	N/A	N/A	N/A	86.85
	04/21/14	18.0	8.0 - 18.0	98.76	10.00	N/A	N/A	N/A	88.76
	09/09/15	18.0	8.0 - 18.0	98.76	13.89	N/A	N/A	N/A	84.87
	07/20/17	18.0	8.0 - 18.0	98.76	11.77	N/A	N/A	N/A	86.99
	01/17/18	18.0	8.0 - 18.0	98.76	12.88	N/A	N/A	N/A	85.88
	05/04/20	18.0	8.0 - 18.0	98.76	10.24	N/A	N/A	N/A	88.52
	11/20/20	18.0	8.0 - 18.0	98.76	10.69	N/A	N/A	N/A	88.07
	07/28/21	18.0	8.0 - 18.0	98.76	12.06	N/A	N/A	N/A	86.70
	12/13/21	18.0	8.0 - 18.0	98.76	Well not requested to be sampled				
	06/06/22	18.0	8.0 - 18.0	98.76	Well not located - possibly destroyed				
	12/21/22	18.0	8.0 - 18.0	98.76	Well not requested to be sampled				

Note: Corrected WL = Static WL - (Product Thickness x Product Gravity)

N/A - Not Applicable

Jash Management LLC, UST Permit #09928

Table 2 – Potentiometric Data

December 21, 2022

Monitor Well ID	Date Gauged	Total Well Depth (feet bgs)	Screened Interval (feet bgs)	Top of Casing Elevation (feet)	Static Water Level (feet bgs)	Static Product Level (feet bgs)	Product Thickness (feet)	Corrected Water Level* (feet)	GW Elevation (feet)
MW-19	05/04/09	18.0	8.0 - 18.0	99.40	12.67	N/A	N/A	N/A	86.73
	04/21/14	18.0	8.0 - 18.0	99.40	10.79	N/A	N/A	N/A	88.61
	09/09/15	18.0	8.0 - 18.0	99.40	14.59	N/A	N/A	N/A	84.81
	07/21/17	18.0	8.0 - 18.0	99.40	12.49	N/A	N/A	N/A	86.91
	01/17/18	18.0	8.0 - 18.0	99.40	13.59	N/A	N/A	N/A	85.81
	05/04/20	18.0	8.0 - 18.0	99.40	10.91	N/A	N/A	N/A	88.49
	11/20/20	18.0	8.0 - 18.0	99.40	11.44	N/A	N/A	N/A	87.96
	07/28/21	18.0	8.0 - 18.0	99.40	12.82	N/A	N/A	N/A	86.58
	12/13/21	18.0	8.0 - 18.0	99.40	14.27	N/A	N/A	N/A	85.13
	06/06/22	18.0	8.0 - 18.0	99.40	14.00	N/A	N/A	N/A	85.40
	12/21/22	18.0	8.0 - 18.0	99.40	Well not sampled - blocked @ 13.50 feet bgs				
MW-20	05/04/09	18.0	8.0 - 18.0	99.86	13.05	N/A	N/A	N/A	86.81
	04/21/14	18.0	8.0 - 18.0	99.86	11.16	N/A	N/A	N/A	88.70
	09/09/15	18.0	8.0 - 18.0	99.86	15.01	N/A	N/A	N/A	84.85
	07/20/17	18.0	8.0 - 18.0	99.86	12.91	N/A	N/A	N/A	86.95
	01/17/18	18.0	8.0 - 18.0	99.86	14.03	N/A	N/A	N/A	85.83
	05/04/20	18.0	8.0 - 18.0	99.86	10.39	N/A	N/A	N/A	89.47
	11/20/20	18.0	8.0 - 18.0	99.86	11.84	N/A	N/A	N/A	88.02
	07/28/21	18.0	8.0 - 18.0	99.86	13.23	N/A	N/A	N/A	86.63
	12/13/21	18.0	8.0 - 18.0	99.86	Well not requested to be sampled				
	06/06/22	18.0	8.0 - 18.0	99.86	14.41	N/A	N/A	N/A	85.45
	12/21/22	18.0	8.0 - 18.0	99.86	Well not requested to be sampled				

Note: Corrected WL = Static WL - (Product Thickness x Product Gravity)

N/A - Not Applicable

Jash Management LLC, UST Permit #09928

Table 2 – Potentiometric Data

December 21, 2022

Monitor Well ID	Date Gauged	Total Well Depth (feet bgs)	Screened Interval (feet bgs)	Top of Casing Elevation (feet)	Static Water Level (feet bgs)	Static Product Level (feet bgs)	Product Thickness (feet)	Corrected Water Level* (feet)	GW Elevation (feet)
MW-21	05/04/09	18.0	8.0 - 18.0	99.63	13.75	N/A	N/A	N/A	85.88
	04/21/14	18.0	8.0 - 18.0	99.63	10.97	N/A	N/A	N/A	88.66
	09/09/15	18.0	8.0 - 18.0	99.63	14.79	N/A	N/A	N/A	84.84
	07/21/17	18.0	8.0 - 18.0	99.63	12.65	N/A	N/A	N/A	86.98
	01/17/18	18.0	8.0 - 18.0	99.63	13.88	N/A	N/A	N/A	85.75
	05/04/20	18.0	8.0 - 18.0	99.63	11.06	N/A	N/A	N/A	88.57
	11/20/20	18.0	8.0 - 18.0	99.63	11.57	N/A	N/A	N/A	88.06
	07/28/21	18.0	8.0 - 18.0	99.63	12.95	N/A	N/A	N/A	86.68
	12/13/21	18.0	8.0 - 18.0	99.63	Well not requested to be sampled				
	06/06/22	18.0	8.0 - 18.0	99.63	14.13	N/A	N/A	N/A	85.50
	12/21/22	18.0	8.0 - 18.0	99.63	Well not requested to be sampled				
MW-22	05/04/09	18.0	8.0 - 18.0	99.77	13.12	N/A	N/A	N/A	86.65
	04/21/14	18.0	8.0 - 18.0	99.77	11.40	N/A	N/A	N/A	88.37
	09/09/15	18.0	8.0 - 18.0	99.77	Well not located				
	07/20/17	18.0	8.0 - 18.0	99.77	Well not located				
	01/17/18	18.0	8.0 - 18.0	99.77	Well not located				
	11/20/20	18.0	8.0 - 18.0	99.77	Well not located				
	12/21/22	18.0	8.0 - 18.0	99.77	Well not requested to be sampled				

Note: Corrected WL = Static WL - (Product Thickness x Product Gravity)

N/A - Not Applicable

Jash Management LLC, UST Permit #09928

Table 2 – Potentiometric Data

December 21, 2022

Monitor Well ID	Date Gauged	Total Well Depth (feet bgs)	Screened Interval (feet bgs)	Top of Casing Elevation (feet)	Static Water Level (feet bgs)	Static Product Level (feet bgs)	Product Thickness (feet)	Corrected Water Level* (feet)	GW Elevation (feet)
MW-23	05/04/09	18.0	8.0 - 18.0	99.69	13.15	N/A	N/A	N/A	86.54
	04/21/14	18.0	8.0 - 18.0	99.69	11.26	N/A	N/A	N/A	88.43
	09/09/15	18.0	8.0 - 18.0	99.69	14.98	N/A	N/A	N/A	84.71
	07/21/17	18.0	8.0 - 18.0	99.69	13.02	N/A	N/A	N/A	86.67
	01/17/18	18.0	8.0 - 18.0	99.69	14.20	N/A	N/A	N/A	85.49
	05/04/20	18.0	8.0 - 18.0	99.69	11.40	N/A	N/A	N/A	88.29
	11/20/20	18.0	8.0 - 18.0	99.69	Well not located				
	07/28/21	18.0	8.0 - 18.0	99.69	13.16	N/A	N/A	N/A	86.53
	12/13/21	18.0	8.0 - 18.0	99.69	Well not requested to be sampled				
	06/06/22	18.0	8.0 - 18.0	99.69	14.41	N/A	N/A	N/A	85.28
	12/21/22	18.0	8.0 - 18.0	99.69	Well not requested to be sampled				
MW-24	05/04/09	18.0	8.0 - 18.0	99.27	12.70	N/A	N/A	N/A	86.57
	04/21/14	18.0	8.0 - 18.0	99.27	10.70	N/A	N/A	N/A	88.57
	09/09/15	18.0	8.0 - 18.0	99.27	Well not located				
	07/20/17	18.0	8.0 - 18.0	99.27	Well not located				
	01/17/18	18.0	8.0 - 18.0	99.27	14.30	N/A	N/A	N/A	84.97
	05/04/20	18.0	8.0 - 18.0	99.27	10.85	N/A	N/A	N/A	88.42
	11/20/20	18.0	8.0 - 18.0	99.27	Well not located				
	07/28/21	18.0	8.0 - 18.0	99.27	Well not located				
	12/13/21	18.0	8.0 - 18.0	99.27	Well not requested to be sampled				
	06/06/22	18.0	8.0 - 18.0	99.27	13.83	N/A	N/A	N/A	85.44
	12/21/22	18.0	8.0 - 18.0	99.27	Well not requested to be sampled				

Note: Corrected WL = Static WL - (Product Thickness x Product Gravity)

N/A - Not Applicable

Jash Management LLC, UST Permit #09928

Table 2 – Potentiometric Data

December 21, 2022

Monitor Well ID	Date Gauged	Total Well Depth (feet bgs)	Screened Interval (feet bgs)	Top of Casing Elevation (feet)	Static Water Level (feet bgs)	Static Product Level (feet bgs)	Product Thickness (feet)	Corrected Water Level* (feet)	GW Elevation (feet)
MW-25	05/04/09	18.0	8.0 - 18.0	99.31	12.60	N/A	N/A	N/A	86.71
	04/21/14	18.0	8.0 - 18.0	99.31	10.62	N/A	N/A	N/A	88.69
	09/09/15	18.0	8.0 - 18.0	99.31	14.41	N/A	N/A	N/A	84.90
	07/21/17	18.0	8.0 - 18.0	99.31	12.45	N/A	N/A	N/A	86.86
	01/17/18	18.0	8.0 - 18.0	99.31	13.47	N/A	N/A	N/A	85.84
	05/04/20	18.0	8.0 - 18.0	99.31	10.34	N/A	N/A	N/A	88.97
	11/20/20	18.0	8.0 - 18.0	99.31	11.37	N/A	N/A	N/A	87.94
	07/28/21	18.0	8.0 - 18.0	99.31	12.69	N/A	N/A	N/A	86.62
	12/13/21	18.0	8.0 - 18.0	99.31	Well not requested to be sampled				
	06/06/22	18.0	8.0 - 18.0	99.31	13.86	N/A	N/A	N/A	85.45
	12/21/22	18.0	8.0 - 18.0	99.31	Well not requested to be sampled				
PW-1	05/04/09	45.0	40.0 - 45.0	98.71	11.40	N/A	N/A	N/A	87.31
	04/21/14	45.0	40.0 - 45.0	98.71	9.60	N/A	N/A	N/A	89.11
	09/09/15	45.0	40.0 - 45.0	98.71	13.73	N/A	N/A	N/A	84.98
	07/20/17	45.0	40.0 - 45.0	98.71	11.56	N/A	N/A	N/A	87.15
	01/17/18	45.0	40.0 - 45.0	98.71	12.72	N/A	N/A	N/A	85.99
	05/04/20	45.0	40.0 - 45.0	98.71	9.69	N/A	N/A	N/A	89.02
	11/20/20	45.0	40.0 - 45.0	98.71	10.54	N/A	N/A	N/A	88.17
	07/28/21	45.0	40.0 - 45.0	98.71	11.88	N/A	N/A	N/A	86.83
	12/13/21	45.0	40.0 - 45.0	98.71	Well not requested to be sampled				
	06/06/22	45.0	40.0 - 45.0	98.71	13.05	N/A	N/A	N/A	85.66
	12/21/22	45.0	40.0 - 45.0	98.71	Well not requested to be sampled				

Note: Corrected WL = Static WL - (Product Thickness x Product Gravity)

N/A - Not Applicable

Jash Management LLC, UST Permit #09928

Table 2 – Potentiometric Data

December 21, 2022

Monitor Well ID	Date Gauged	Total Well Depth (feet bgs)	Screened Interval (feet bgs)	Top of Casing Elevation (feet)	Static Water Level (feet bgs)	Static Product Level (feet bgs)	Product Thickness (feet)	Corrected Water Level* (feet)	GW Elevation (feet)
PW-2	05/04/09	45.0	40.0 - 45.0	98.71	11.96	N/A	N/A	N/A	86.75
	04/21/14	45.0	40.0 - 45.0	98.71	9.89	N/A	N/A	N/A	88.82
	09/09/15	45.0	40.0 - 45.0	98.71	13.95	N/A	N/A	N/A	84.76
	07/20/17	45.0	40.0 - 45.0	98.71	11.77	N/A	N/A	N/A	86.94
	01/17/18	45.0	40.0 - 45.0	98.71	12.82	N/A	N/A	N/A	85.89
	05/04/20	45.0	40.0 - 45.0	98.71	10.31	N/A	N/A	N/A	88.40
	11/20/20	45.0	40.0 - 45.0	98.71	10.71	N/A	N/A	N/A	88.00
	07/28/21	45.0	40.0 - 45.0	98.71	12.10	N/A	N/A	N/A	86.61
	12/13/21	45.0	40.0 - 45.0	98.71	Well not requested to be sampled				
	06/06/22	45.0	40.0 - 45.0	98.71	Well not located - possibly destroyed				
	12/21/22	45.0	40.0 - 45.0	98.71	Well not requested to be sampled				

Note: Corrected WL = Static WL - (Product Thickness x Product Gravity)

N/A - Not Applicable

Jash Management LLC, UST Permit #09928
Table 3 – Groundwater Analytical Data (Current)
 December 21, 2022

Monitor Well ID	Date Sampled	Benzene	Toluene	Ethyl-benzene	Total Xylenes	Naphthalene	MTBE	1,2-DCA
RBSLs	---	5.0	1,000	700	10,000	25	40	5 (MCL)
Duplicate (MW-15)	12/21/22	ND (1.0)	ND (1.0)	ND (1.0)	ND (1.0)	ND (1.0)	ND (1.0)	ND (1.0)
Field Blank	12/21/22	ND (1.0)	ND (1.0)	ND (1.0)	ND (1.0)	ND (1.0)	ND (1.0)	ND (1.0)
Trip Blank	12/21/22	ND (1.0)	ND (1.0)	ND (1.0)	ND (1.0)	ND (1.0)	ND (1.0)	ND (1.0)
WW-1	12/21/22	ND (0.50)	ND (0.50)	ND (0.50)	ND (0.50)	ND (0.50)	ND (0.50)	ND (0.50)
WW-2	12/21/22	ND (0.50)	ND (0.50)	ND (0.50)	ND (0.50)	ND (0.50)	ND (0.50)	ND (0.50)
WW-3	12/21/22	ND (0.50)	ND (0.50)	ND (0.50)	ND (0.50)	ND (0.50)	ND (0.50)	ND (0.50)
WW-4	12/21/22	Well not sampled - denied access to property						
WW-5	12/21/22	Well not sampled - well not in service no power to residence						
WW-7	12/21/22	ND (0.50)	ND (0.50)	ND (0.50)	ND (0.50)	ND (0.50)	ND (0.50)	ND (0.50)
WW-8	12/21/22	ND (0.50)	ND (0.50)	ND (0.50)	ND (0.50)	ND (0.50)	ND (0.50)	ND (0.50)
WW Duplicate (WW-7)	12/21/22	ND (0.50)	ND (0.50)	ND (0.50)	ND (0.50)	ND (0.50)	ND (0.50)	ND (0.50)
WW Field Blank	12/21/22	ND (0.50)	ND (0.50)	ND (0.50)	ND (0.50)	ND (0.50)	ND (0.50)	ND (0.50)
WW Trip Blank	12/21/22	ND (0.50)	ND (0.50)	ND (0.50)	ND (0.50)	ND (0.50)	ND (0.50)	ND (0.50)

Note:

All units expressed in µg/L (PPB)

MCL - Maximum Contaminant Level

ND () - Not Detected Above Limit of Quantitation (limit in µg/l)

Jash Management LLC, UST Permit #09928
Table 3 – Groundwater Analytical Data (Current)
 December 21, 2022

Monitor Well ID	Date Sampled	Benzene	Toluene	Ethyl-benzene	Total Xylenes	Naphthalene	MTBE	1,2-DCA
RBSLs	- - -	5.0	1,000	700	10,000	25	40	5 (MCL)
MW-3	12/21/22	Well not requested to be sampled during this event						
MW-4	12/21/22	27	4.4	190	9.8	150	ND (1.0)	ND (1.0)
MW-5R	12/21/22	ND (1.0)	ND (1.0)	ND (1.0)	ND (1.0)	ND (1.0)	ND (1.0)	ND (1.0)
MW-6	12/21/22	120	1,400	1,400	4,600	730	ND (20)	ND (20)
MW-7	12/21/22	Well not requested to be sampled during this event						
MW-8	12/21/22	Well not requested to be sampled during this event						
MW-12	12/21/22	Well not requested to be sampled during this event						
MW-14	12/21/22	Well not requested to be sampled during this event						
MW-15	12/21/22	ND (1.0)	ND (1.0)	ND (1.0)	ND (1.0)	ND (1.0)	ND (1.0)	ND (1.0)
MW-16	12/21/22	Well not requested to be sampled during this event						
MW-17	12/21/22	Well not requested to be sampled during this event						
MW-18	12/21/22	Well not requested to be sampled during this event						
MW-19	12/21/22	Well not gauged - sampled @ 13.50 feet bgs						
MW-20	12/21/22	Well not requested to be sampled during this event						
MW-21	12/21/22	Well not requested to be sampled during this event						
MW-22	12/21/22	Well not requested to be sampled during this event						
MW-23	12/21/22	Well not requested to be sampled during this event						
MW-24	12/21/22	Well not requested to be sampled during this event						
MW-25	12/21/22	Well not requested to be sampled during this event						
PW-1	12/21/22	Well not requested to be sampled during this event						
PW-2	12/21/22	Well not requested to be sampled during this event						

Note:

All units expressed in µg/L (PPB)

MCL - Maximum Contaminant Level

ND () - Not Detected Above Limit of Quantitation (limit in µg/l)

Jash Management LLC, UST Permit #09928
Table 3 – Groundwater Analytical Data (Current)
 --8 Oxygenates--
 December 21, 2022

Monitor Well ID	Date Sampled	DIPE	Ethanol	ETBA	ETBE	TAA	TAME	TBA	TBF
Action Levels	---	150	10,000	N/A	47	240	128	1,400	N/A
MW-3	12/21/22	Well not requested to be sampled during this event							
MW-4	12/21/22	2.6	ND (100)	ND (20)	ND (1.0)	ND (20)	ND (10)	ND (20)	ND (5.0)
MW-5R	12/21/22	ND (1.0)	ND (100)	ND (20)	ND (1.0)	ND (20)	ND (10)	ND (20)	ND (5.0)
MW-6	12/21/22	ND (20)	ND (2,000)	ND (400)	ND (20)	ND (400)	ND (200)	ND (400)	ND (100)
MW-7	12/21/22	Well not requested to be sampled during this event							
MW-8	12/21/22	Well not requested to be sampled during this event							
MW-12	12/21/22	Well not requested to be sampled during this event							
MW-14	12/21/22	Well not requested to be sampled during this event							
MW-15	12/21/22	ND (1.0)	ND (100)	ND (20)	ND (1.0)	ND (20)	ND (10)	ND (20)	ND (5.0)
MW-16	12/21/22	Well not requested to be sampled during this event							
MW-17	12/21/22	Well not requested to be sampled during this event							
MW-18	12/21/22	Well not requested to be sampled during this event							
MW-19	12/21/22	Well not sampled - blocked @ 13.50 feet bgs							
MW-20	12/21/22	Well not requested to be sampled during this event							
MW-21	12/21/22	Well not requested to be sampled during this event							
MW-22	12/21/22	Well not requested to be sampled during this event							
MW-23	12/21/22	Well not requested to be sampled during this event							
MW-24	12/21/22	Well not requested to be sampled during this event							
MW-25	12/21/22	Well not requested to be sampled during this event							
PW-1	12/21/22	Well not requested to be sampled during this event							
PW-2	12/21/22	Well not requested to be sampled during this event							

Note:

All units expressed in µg/L (PPB)

N/A - Not Applicable

ND () - Not Detected Above Limit of Quantitation (limit in µg/l)

Jash Management LLC, UST Permit #09928
Table 3 – Groundwater Analytical Data (Current)
 --8 Oxygenates--
 December 21, 2022

Monitor Well ID	Date Sampled	DIPE	Ethanol	ETBA	ETBE	TAA	TAME	TBA	TBF
Action Levels	---	150	10,000	N/A	47	240	128	1,400	N/A
Duplicate (MW-15)	12/21/22	ND (1.0)	ND (100)	ND (20)	ND (1.0)	ND (20)	ND (10)	ND (20)	ND (5.0)
Field Blank	12/21/22	ND (1.0)	ND (100)	ND (20)	ND (1.0)	ND (20)	ND (10)	ND (20)	ND (5.0)
Trip Blank	12/21/22	ND (1.0)	ND (100)	ND (20)	ND (1.0)	ND (20)	ND (10)	ND (20)	ND (5.0)
WW-1	12/21/22	ND (1.0)	ND (100)	ND (20)	ND (1.0)	ND (20)	ND (10)	ND (20)	ND (5.0)
WW-2	12/21/22	ND (1.0)	ND (100)	ND (20)	ND (1.0)	ND (20)	ND (10)	ND (20)	ND (5.0)
WW-3	12/21/22	ND (1.0)	ND (100)	ND (20)	ND (1.0)	ND (20)	ND (10)	ND (20)	ND (5.0)
WW-4	12/21/22	Well not sampled - denied access to property							
WW-5	12/21/22	Well not sampled - well not in service no power to residence							
WW-7	12/21/22	ND (1.0)	ND (100)	ND (20)	ND (1.0)	ND (20)	ND (10)	ND (20)	ND (5.0)
WW-8	12/21/22	ND (1.0)	ND (100)	ND (20)	ND (1.0)	ND (20)	ND (10)	ND (20)	ND (5.0)
WW Duplicate (WW-7)	12/21/22	ND (1.0)	ND (100)	ND (20)	ND (1.0)	ND (20)	ND (10)	ND (20)	ND (5.0)
WW Field Blank	12/21/22	ND (1.0)	ND (100)	ND (20)	ND (1.0)	ND (20)	ND (10)	ND (20)	ND (5.0)
WW Trip Blank	12/21/22	ND (1.0)	ND (100)	ND (20)	ND (1.0)	ND (20)	ND (10)	ND (20)	ND (5.0)

Note:

All units expressed in µg/L (PPB)

N/A - Not Applicable

ND () - Not Detected Above Limit of Quantitation (limit in µg/l)

Jash Management LLC, UST Permit #09928
Table 3A – Groundwater Analytical Data (Current)
 --SSTLs--
 December 21, 2022

Monitor Well ID	Date Sampled	Benzene	Toluene	Ethyl-benzene	Total Xylenes	Naphthalene	MTBE	1,2-DCA
RBSLs	---	5.0	1,000	700	10,000	25	40	5 (MCL)
SSTLs (source/MW-6)	---	415	26,540	3,700	21,680	6,700	1,357	417
MW-4	12/21/22	27	4.4	190	9.8	150	ND (1.0)	ND (1.0)
MW-5R	12/21/22	ND (1.0)	ND (1.0)	ND (1.0)	ND (1.0)	ND (1.0)	ND (1.0)	ND (1.0)
MW-6	12/21/22	120	1,400	1,400	4,600	730	ND (20)	ND (20)
SSTLs (MW-15)	---	1,543	26,540	3,700	21,680	6,700	3,876	1,551
MW-15	12/21/22	ND (1.0)	ND (1.0)	ND (1.0)	ND (1.0)	ND (1.0)	ND (1.0)	ND (1.0)

Note:

All units expressed in µg/L (PPB)

MCL - Maximum Contaminant Level

ND () - Not Detected Above Limit of Quantitation (limit in µg/l)

SSTLs - Site Specific Target Levels

Jash Management LLC, UST Permit #09928
Table 4 – Groundwater Analytical Data (Current & Historical)
 December 21, 2022

Monitor Well ID	Date Sampled	Benzene	Toluene	Ethyl-benzene	Total Xylenes	Naphthalene	MTBE	1,2-DCA	EDB
RBSLs	---	5.0	1,000	700	10,000	25	40	5 (MCL)	0.05
MW-1	08/13/07	ND	ND	ND	ND	ND	ND	ND	ND
	05/04/09	ND (1.0)	ND (1.0)	ND (1.0)	ND (1.0)	ND (1.0)	ND (1.0)	ND (1.0)	ND (0.020)
	04/23/14	ND (1.0)	ND (1.0)	ND (1.0)	ND (1.0)	ND (1.0)	ND (1.0)	ND (1.0)	NA
	09/18/14	Well not sampled							
	09/09/15	Well destroyed							
MW-2	08/13/07	70	ND	ND	27	ND	10	ND	ND
	05/04/09	ND (1.0)	ND (1.0)	ND (1.0)	ND (1.0)	ND (1.0)	ND (1.0)	ND (1.0)	ND (0.019)
	04/23/14	ND (1.0)	ND (1.0)	ND (1.0)	ND (1.0)	ND (1.0)	ND (1.0)	ND (1.0)	NA
	09/18/14	Well not sampled							
	09/10/15	ND (1.0)	ND (1.0)	ND (1.0)	ND (1.0)	ND (1.0)	ND (1.0)	ND (1.0)	NA
	07/20/17	ND (1.0)	ND (1.0)	ND (1.0)	ND (1.0)	ND (1.0)	ND (1.0)	ND (1.0)	NA
	01/17/18	ND (1.0)	ND (1.0)	ND (1.0)	ND (1.0)	ND (1.0)	ND (1.0)	ND (1.0)	NA
	05/04/20	ND (1.0)	ND (1.0)	ND (1.0)	ND (1.0)	ND (1.0)	ND (1.0)	ND (1.0)	NA
	11/20/20	Well not requested to be sampled during this event							
	07/29/21	ND (1.0)	ND (1.0)	ND (1.0)	ND (1.0)	ND (1.0)	ND (1.0)	ND (1.0)	NA
	12/13/21	Well not requested to be sampled during this event							
	06/06/22	Well destroyed							

Note: All units expressed in µg/L (PPB)
 ND () - Not Detected Above Limit of Quantitation (limit in µg/l)

MCL - Maximum Contaminant Level
 NA - Not Analyzed

Jash Management LLC, UST Permit #09928
Table 4 – Groundwater Analytical Data (Current & Historical)
 December 21, 2022

Monitor Well ID	Date Sampled	Benzene	Toluene	Ethyl-benzene	Total Xylenes	Naphthalene	MTBE	1,2-DCA	EDB
RBSLs	---	5.0	1,000	700	10,000	25	40	5 (MCL)	0.05
MW-3	07/07/06	620	690	130	620	ND	160	NA	NA
	08/13/07	1,400	380	200	790	ND	650	ND	ND
	05/04/09	77	37	28	86	ND (1.0)	28	ND (1.0)	ND (0.020)
	04/23/14	ND (1.0)	ND (1.0)	ND (1.0)	ND (1.0)	ND (1.0)	ND (1.0)	ND (1.0)	NA
	09/18/14	Well not sampled							
	09/10/15	ND (1.0)	ND (1.0)	ND (1.0)	ND (1.0)	ND (1.0)	ND (1.0)	ND (1.0)	NA
	07/20/17	ND (1.0)	ND (1.0)	ND (1.0)	ND (1.0)	ND (1.0)	ND (1.0)	ND (1.0)	NA
	01/17/18	ND (1.0)	ND (1.0)	ND (1.0)	ND (1.0)	ND (1.0)	ND (1.0)	ND (1.0)	NA
	05/04/20	ND (1.0)	ND (1.0)	ND (1.0)	ND (1.0)	ND (1.0)	ND (1.0)	ND (1.0)	NA
	11/20/20	Well not requested to be sampled during this event							
	07/29/21	ND (1.0)	ND (1.0)	ND (1.0)	ND (1.0)	ND (1.0)	ND (1.0)	ND (1.0)	NA
	12/13/21	Well not requested to be sampled during this event							
	06/06/22	ND (1.0)	ND (1.0)	ND (1.0)	ND (1.0)	ND (1.0)	ND (1.0)	ND (1.0)	NA
	12/21/22	Well not requested to be sampled during this event							

Note: All units expressed in µg/L (PPB)
 ND () - Not Detected Above Limit of Quantitation (limit in µg/l)

MCL - Maximum Contaminant Level
 NA - Not Analyzed

Jash Management LLC, UST Permit #09928
Table 4 – Groundwater Analytical Data (Current & Historical)
December 21, 2022

Monitor Well ID	Date Sampled	Benzene	Toluene	Ethylbenzene	Total Xylenes	Naphthalene	MTBE	1,2-DCA	EDB
RBSLs	---	5.0	1,000	700	10,000	25	40	5 (MCL)	0.05
MW-4	07/07/06	670	1,600	160	1,700	ND	1,900	NA	NA
	08/13/07	5,500	170	1,200	4,600	620	10,000	ND	ND
	05/04/09	6,300	20,000	3,000	16,000	990	2,000	ND (100)	ND (0.019)
	04/23/14	840	7,300	2,300	11,000	580	ND (50)	ND (50)	NA
	09/18/14	Well not sampled							
	09/10/15	310	2,900	1,500	6,000	480	ND (20)	ND (20)	NA
	07/20/17	110	52	320	590	430	ND (5.0)	ND (5.0)	NA
	01/17/18	110	220	630	1,200	290	ND (5.0)	ND (5.0)	NA
	05/04/20	48	14	110	840	220	ND (5.0)	ND (5.0)	NA
	11/20/20	15	2.5	17	59	47	ND (1.0)	ND (1.0)	ND (0.019)
	07/29/21	21	1.1	1.6	67	49	ND (1.0)	ND (1.0)	NA
	12/13/21	93	2.9	110	13	170	4.0	ND (1.0)	NA
	06/06/22	38	2.3	28	84	60	2.0	ND (1.0)	NA
	12/21/22	27	4.4	190	9.8	150	ND (1.0)	ND (1.0)	NA
MW-5	08/13/07	Free Product (0.21 foot)							
	05/04/09	Free Product (0.14 foot)							
	04/23/14	Well not sampled - blocked @ 4.5 bgs							
	09/18/14	Well abandoned							

Note: All units expressed in µg/L (PPB)
ND () - Not Detected Above Limit of Quantitation (limit in µg/l)

MCL - Maximum Contaminant Level
NA - Not Analyzed

Jash Management LLC, UST Permit #09928
Table 4 – Groundwater Analytical Data (Current & Historical)
 December 21, 2022

Monitor Well ID	Date Sampled	Benzene	Toluene	Ethylbenzene	Total Xylenes	Naphthalene	MTBE	1,2-DCA	EDB
RBSLs	---	5.0	1,000	700	10,000	25	40	5 (MCL)	0.05
MW-5R	09/18/14	ND (1.0)	74	180	1,200	44	ND (1.0)	ND (1.0)	NA
	09/09/15	Free Product (0.01 foot)							
	07/20/17	ND (1.0)	ND (1.0)	ND (1.0)	2.9	ND (1.0)	ND (1.0)	ND (1.0)	NA
	01/17/18	ND (1.0)	ND (1.0)	ND (1.0)	ND (1.0)	ND (1.0)	ND (1.0)	ND (1.0)	NA
	05/04/20	ND (1.0)	2.0	6.4	52	10	ND (1.0)	ND (1.0)	NA
	11/20/20	ND (5.0)	28	81	490	62	ND (5.0)	ND (5.0)	ND (0.020)
	07/29/21	ND (1.0)	ND (1.0)	ND (1.0)	ND (1.0)	ND (1.0)	ND (1.0)	ND (1.0)	NA
	12/13/21	ND (1.0)	ND (1.0)	ND (1.0)	ND (1.0)	ND (1.0)	ND (1.0)	ND (1.0)	NA
	06/06/22	ND (1.0)	ND (1.0)	ND (1.0)	ND (1.0)	ND (1.0)	ND (1.0)	ND (1.0)	NA
	12/21/22	ND (1.0)	ND (1.0)	ND (1.0)	ND (1.0)	ND (1.0)	ND (1.0)	ND (1.0)	NA
MW-6	04/18/07	4,000	8,000	1,100	6,200	2,700	ND (1,000)	NA	0.5
	08/13/07	10,000	19,000	2,900	15,000	710	3,600	ND	ND
	05/04/09	4,000	11,000	2,500	14,000	1,300	1,300	ND (50)	ND (0.020)
	04/23/14	380	5,900	1,800	9,900	860	ND (50)	ND (50)	NA
	09/18/14	Well not sampled							
	09/10/15	180	1,900	1,300	6,500	570	ND (20)	ND (20)	NA
	07/20/17	510	1,000	1,100	4,300	950	ND (20)	ND (20)	NA
	01/17/18	620	2,300	2,800	14,000	1,300	ND (100)	ND (100)	NA
	05/04/20	980	19	960	530	1,600	16	ND (10)	NA
	11/20/20	1,600	140	1,000	910	1,500	46	ND (20)	ND (0.019)
	07/29/21	850	1,200	1,400	4,400	1,600	31	ND (20)	NA
	12/13/21	350	1,600	1,700	7,100	1,200	15	7.7	NA
	06/06/22	230	1,900	1,900	6,400	770	ND (50)	ND (50)	NA
	12/21/22	120	1,400	1,400	4,600	730	ND (20)	ND (20)	NA

Note: All units expressed in µg/L (PPB)
 ND () - Not Detected Above Limit of Quantitation (limit in µg/l)

MCL - Maximum Contaminant Level
 NA - Not Analyzed

Jash Management LLC, UST Permit #09928
Table 4 – Groundwater Analytical Data (Current & Historical)
 December 21, 2022

Monitor Well ID	Date Sampled	Benzene	Toluene	Ethyl-benzene	Total Xylenes	Naphth-alene	MTBE	1,2-DCA	EDB
RBSLs	---	5.0	1,000	700	10,000	25	40	5 (MCL)	0.05
MW-7	05/06/09	ND (1.0)	ND (1.0)	ND (1.0)	ND (1.0)	ND (1.0)	ND (1.0)	ND (1.0)	ND (0.019)
	04/23/14	ND (1.0)	ND (1.0)	ND (1.0)	ND (1.0)	ND (1.0)	ND (1.0)	ND (1.0)	NA
	09/18/14	Well not sampled							
	09/10/15	ND (1.0)	ND (1.0)	ND (1.0)	ND (1.0)	ND (1.0)	ND (1.0)	ND (1.0)	NA
	07/20/17	ND (1.0)	ND (1.0)	ND (1.0)	ND (1.0)	ND (1.0)	ND (1.0)	ND (1.0)	NA
	01/17/18	ND (1.0)	ND (1.0)	ND (1.0)	ND (1.0)	ND (1.0)	ND (1.0)	ND (1.0)	NA
	05/04/20	ND (1.0)	ND (1.0)	ND (1.0)	ND (1.0)	ND (1.0)	ND (1.0)	ND (1.0)	NA
	11/20/20	Well not requested to be sampled during this event							
	07/29/21	ND (1.0)	ND (1.0)	ND (1.0)	ND (1.0)	ND (1.0)	ND (1.0)	ND (1.0)	NA
	12/13/21	Well not requested to be sampled during this event							
	06/06/22	Well not sampled - unable to open well due to a bolt rounded off							
	12/21/22	Well not requested to be sampled during this event							
MW-8	05/04/09	ND (1.0)	ND (1.0)	ND (1.0)	ND (1.0)	ND (1.0)	ND (1.0)	ND (1.0)	ND (0.020)
	04/23/14	ND (1.0)	ND (1.0)	ND (1.0)	ND (1.0)	ND (1.0)	ND (1.0)	ND (1.0)	NA
	09/18/14	Well not sampled							
	09/10/15	ND (1.0)	ND (1.0)	ND (1.0)	ND (1.0)	ND (1.0)	ND (1.0)	ND (1.0)	NA
	07/20/17	ND (1.0)	ND (1.0)	ND (1.0)	ND (1.0)	ND (1.0)	ND (1.0)	ND (1.0)	NA
	01/17/18	ND (1.0)	ND (1.0)	ND (1.0)	ND (1.0)	ND (1.0)	ND (1.0)	ND (1.0)	NA
	05/05/20	Well not located - possibly paved over							
	11/20/20	Well not requested to be sampled during this event							
	07/29/21	ND (1.0)	ND (1.0)	ND (1.0)	ND (1.0)	ND (1.0)	ND (1.0)	ND (1.0)	NA
	12/13/21	Well not requested to be sampled during this event							
	06/06/22	ND (1.0)	ND (1.0)	ND (1.0)	ND (1.0)	ND (1.0)	ND (1.0)	ND (1.0)	NA
	12/21/22	Well not requested to be sampled during this event							

Note:

All units expressed in µg/L (PPB)

ND () - Not Detected Above Limit of Quantitation (limit in µg/l)

MCL - Maximum Contaminant Level

NA - Not Analyzed

Jash Management LLC, UST Permit #09928

Table 4 – Groundwater Analytical Data (Current & Historical)

December 21, 2022

Monitor Well ID	Date Sampled	Benzene	Toluene	Ethyl-benzene	Total Xylenes	Naphth-alene	MTBE	1,2-DCA	EDB
RBSLs	---	5.0	1,000	700	10,000	25	40	5 (MCL)	0.05
MW-12	05/05/09	ND (1.0)	ND (1.0)	ND (1.0)	ND (1.0)	ND (1.0)	ND (1.0)	ND (1.0)	ND (0.020)
	04/23/14	ND (1.0)	ND (1.0)	ND (1.0)	ND (1.0)	ND (1.0)	ND (1.0)	ND (1.0)	NA
	09/18/14	Well not sampled							
	09/09/15	ND (1.0)	ND (1.0)	ND (1.0)	ND (1.0)	ND (1.0)	ND (1.0)	ND (1.0)	NA
	07/20/17	ND (1.0)	ND (1.0)	ND (1.0)	ND (1.0)	ND (1.0)	ND (1.0)	ND (1.0)	NA
	01/17/18	ND (1.0)	ND (1.0)	ND (1.0)	ND (1.0)	ND (1.0)	ND (1.0)	ND (1.0)	NA
	05/05/20	ND (1.0)	ND (1.0)	ND (1.0)	ND (1.0)	ND (1.0)	ND (1.0)	ND (1.0)	NA
	11/20/20	Well not requested to be sampled during this event							
	07/28/21	ND (1.0)	ND (1.0)	ND (1.0)	ND (1.0)	ND (1.0)	ND (1.0)	ND (1.0)	NA
	12/13/21	Well not requested to be sampled during this event							
	06/06/22	ND (1.0)	ND (1.0)	ND (1.0)	ND (1.0)	ND (1.0)	ND (1.0)	ND (1.0)	NA
	12/21/22	Well not requested to be sampled during this event							
MW-13	05/06/09	ND (1.0)	ND (1.0)	ND (1.0)	1.6	ND (1.0)	ND (1.0)	ND (1.0)	ND (0.020)
	04/23/14	ND (1.0)	ND (1.0)	ND (1.0)	ND (1.0)	ND (1.0)	ND (1.0)	ND (1.0)	NA
	09/18/14	Well not sampled							
	09/09/15	ND (1.0)	ND (1.0)	ND (1.0)	ND (1.0)	ND (1.0)	ND (1.0)	ND (1.0)	NA
	07/20/17	ND (1.0)	ND (1.0)	ND (1.0)	ND (1.0)	ND (1.0)	ND (1.0)	ND (1.0)	NA
	01/17/18	ND (1.0)	ND (1.0)	ND (1.0)	ND (1.0)	ND (1.0)	ND (1.0)	ND (1.0)	NA
	11/20/20	Well abandoned							

Note:

All units expressed in µg/L (PPB)

ND () - Not Detected Above Limit of Quantitation (limit in µg/l)

MCL - Maximum Contaminant Level

NA - Not Analyzed

Jash Management LLC, UST Permit #09928

Table 4 – Groundwater Analytical Data (Current & Historical)

December 21, 2022

Monitor Well ID	Date Sampled	Benzene	Toluene	Ethyl-benzene	Total Xylenes	Naphth-alene	MTBE	1,2-DCA	EDB
RBSLs	---	5.0	1,000	700	10,000	25	40	5 (MCL)	0.05
MW-14	05/04/09	ND (1.0)	ND (1.0)	ND (1.0)	ND (1.0)	ND (1.0)	ND (1.0)	ND (1.0)	ND (0.020)
	04/22/14	ND (1.0)	ND (1.0)	ND (1.0)	ND (1.0)	ND (1.0)	ND (1.0)	ND (1.0)	NA
	09/18/14	Well not sampled							
	09/09/15	ND (1.0)	ND (1.0)	ND (1.0)	ND (1.0)	ND (1.0)	ND (1.0)	ND (1.0)	NA
	07/20/17	ND (1.0)	ND (1.0)	ND (1.0)	ND (1.0)	ND (1.0)	ND (1.0)	ND (1.0)	NA
	01/17/18	ND (1.0)	ND (1.0)	ND (1.0)	ND (1.0)	ND (1.0)	ND (1.0)	ND (1.0)	NA
	05/04/20	ND (1.0)	ND (1.0)	ND (1.0)	ND (1.0)	ND (1.0)	ND (1.0)	ND (1.0)	NA
	11/20/20	Well not requested to be sampled during this event							
	07/29/21	ND (1.0)	ND (1.0)	ND (1.0)	ND (1.0)	ND (1.0)	ND (1.0)	ND (1.0)	NA
	12/13/21	Well not requested to be sampled during this event							
	06/06/22	ND (1.0)	ND (1.0)	ND (1.0)	ND (1.0)	ND (1.0)	ND (1.0)	ND (1.0)	NA
	12/21/22	Well not requested to be sampled during this event							
MW-15	05/05/09	1,000	650	330	1,100	90	1,600	ND (10)	ND (0.019)
	04/22/14	ND (1.0)	ND (1.0)	3.6	3.3	2.2	7.3	ND (1.0)	NA
	09/18/14	Well not sampled							
	09/09/15	150	810	490	2,000	170	5.8	ND (5.0)	NA
	07/20/17	ND (1.0)	ND (1.0)	ND (1.0)	ND (1.0)	ND (1.0)	1.7	ND (1.0)	NA
	01/18/18	ND (1.0)	ND (1.0)	ND (1.0)	ND (1.0)	ND (1.0)	ND (1.0)	ND (1.0)	NA
	05/04/20	ND (1.0)	ND (1.0)	ND (1.0)	ND (1.0)	ND (1.0)	ND (1.0)	ND (1.0)	NA
	11/20/20	ND (1.0)	ND (1.0)	ND (1.0)	ND (1.0)	ND (1.0)	ND (1.0)	ND (1.0)	ND (0.019)
	07/28/21	ND (1.0)	ND (1.0)	ND (1.0)	ND (1.0)	ND (1.0)	ND (1.0)	ND (1.0)	NA
	12/13/21	ND (1.0)	ND (1.0)	ND (1.0)	ND (1.0)	ND (1.0)	ND (1.0)	ND (1.0)	NA
	06/06/22	ND (1.0)	ND (1.0)	ND (1.0)	ND (1.0)	ND (1.0)	ND (1.0)	ND (1.0)	NA
	12/21/22	ND (1.0)	ND (1.0)	ND (1.0)	ND (1.0)	ND (1.0)	ND (1.0)	ND (1.0)	NA

Note:

All units expressed in µg/L (PPB)

ND () - Not Detected Above Limit of Quantitation (limit in µg/l)

MCL - Maximum Contaminant Level

NA - Not Analyzed

Jash Management LLC, UST Permit #09928

Table 4 – Groundwater Analytical Data (Current & Historical)

December 21, 2022

Monitor Well ID	Date Sampled	Benzene	Toluene	Ethyl-benzene	Total Xylenes	Naphth-alene	MTBE	1,2-DCA	EDB
RBSLs	---	5.0	1,000	700	10,000	25	40	5 (MCL)	0.05
MW-16	05/05/09	ND (1.0)	ND (1.0)	ND (1.0)	ND (1.0)	ND (1.0)	ND (1.0)	ND (1.0)	ND (0.019)
	04/22/14	ND (1.0)	ND (1.0)	ND (1.0)	ND (1.0)	ND (1.0)	ND (1.0)	ND (1.0)	NA
	09/18/14	Well not sampled							
	09/09/15	ND (1.0)	ND (1.0)	ND (1.0)	ND (1.0)	ND (1.0)	ND (1.0)	ND (1.0)	NA
	07/20/17	Well not sampled - covered by car							
	01/18/18	ND (1.0)	ND (1.0)	ND (1.0)	ND (1.0)	ND (1.0)	ND (1.0)	ND (1.0)	NA
	05/05/20	ND (1.0)	ND (1.0)	ND (1.0)	ND (1.0)	ND (1.0)	ND (1.0)	ND (1.0)	NA
	11/20/20	Well not requested to be sampled during this event							
	07/28/21	ND (1.0)	ND (1.0)	ND (1.0)	ND (1.0)	ND (1.0)	ND (1.0)	ND (1.0)	NA
	12/13/21	Well not requested to be sampled during this event							
	06/06/22	ND (1.0)	ND (1.0)	ND (1.0)	ND (1.0)	ND (1.0)	ND (1.0)	ND (1.0)	NA
	12/21/22	Well not requested to be sampled during this event							
MW-17	05/04/09	ND (1.0)	ND (1.0)	ND (1.0)	ND (1.0)	ND (1.0)	ND (1.0)	ND (1.0)	ND (0.020)
	04/22/14	ND (1.0)	ND (1.0)	ND (1.0)	ND (1.0)	ND (1.0)	ND (1.0)	ND (1.0)	NA
	09/18/14	Well not sampled							
	09/09/15	ND (1.0)	ND (1.0)	ND (1.0)	ND (1.0)	ND (1.0)	ND (1.0)	ND (1.0)	NA
	07/20/17	ND (1.0)	ND (1.0)	ND (1.0)	ND (1.0)	ND (1.0)	ND (1.0)	ND (1.0)	NA
	01/17/18	ND (1.0)	ND (1.0)	ND (1.0)	ND (1.0)	ND (1.0)	ND (1.0)	ND (1.0)	NA
	05/04/20	ND (1.0)	ND (1.0)	ND (1.0)	ND (1.0)	ND (1.0)	ND (1.0)	ND (1.0)	NA
	11/20/20	Well not requested to be sampled during this event							
	07/28/21	ND (1.0)	ND (1.0)	ND (1.0)	ND (1.0)	ND (1.0)	ND (1.0)	ND (1.0)	NA
	12/13/21	Well not requested to be sampled during this event							
	06/06/22	ND (1.0)	ND (1.0)	ND (1.0)	ND (1.0)	ND (1.0)	ND (1.0)	ND (1.0)	NA
	12/21/22	Well not requested to be sampled during this event							

Note:

All units expressed in µg/L (PPB)

ND () - Not Detected Above Limit of Quantitation (limit in µg/l)

MCL - Maximum Contaminant Level

NA - Not Analyzed

Jash Management LLC, UST Permit #09928

Table 4 – Groundwater Analytical Data (Current & Historical)

December 21, 2022

Monitor Well ID	Date Sampled	Benzene	Toluene	Ethyl-benzene	Total Xylenes	Naphth-alene	MTBE	1,2-DCA	EDB
RBSLs	---	5.0	1,000	700	10,000	25	40	5 (MCL)	0.05
MW-18	05/04/09	ND (1.0)	ND (1.0)	ND (1.0)	ND (1.0)	ND (1.0)	ND (1.0)	ND (1.0)	ND (0.019)
	04/22/14	ND (1.0)	ND (1.0)	ND (1.0)	ND (1.0)	ND (1.0)	ND (1.0)	ND (1.0)	NA
	09/18/14	Well not sampled							
	09/09/15	ND (1.0)	ND (1.0)	ND (1.0)	ND (1.0)	ND (1.0)	ND (1.0)	ND (1.0)	NA
	07/20/17	ND (1.0)	ND (1.0)	ND (1.0)	ND (1.0)	ND (1.0)	ND (1.0)	ND (1.0)	NA
	01/17/18	ND (1.0)	ND (1.0)	ND (1.0)	ND (1.0)	ND (1.0)	ND (1.0)	ND (1.0)	NA
	05/05/20	ND (1.0)	ND (1.0)	ND (1.0)	ND (1.0)	ND (1.0)	ND (1.0)	ND (1.0)	NA
	11/20/20	Well not requested to be sampled during this event							
	07/28/21	ND (1.0)	ND (1.0)	ND (1.0)	ND (1.0)	ND (1.0)	ND (1.0)	ND (1.0)	NA
	12/13/21	Well not requested to be sampled during this event							
	06/06/22	Well not located - possibly destroyed (owner stated new grading occurred on property)							
	12/21/22	Well not requested to be sampled during this event							
MW-19	05/05/09	ND (1.0)	ND (1.0)	ND (1.0)	ND (1.0)	ND (1.0)	42	ND (1.0)	ND (0.019)
	04/22/14	ND (1.0)	ND (1.0)	ND (1.0)	ND (1.0)	ND (1.0)	8.5	ND (1.0)	NA
	09/18/14	Well not sampled							
	09/09/15	ND (1.0)	ND (1.0)	ND (1.0)	ND (1.0)	ND (1.0)	11	ND (1.0)	NA
	07/21/17	ND (1.0)	ND (1.0)	ND (1.0)	ND (1.0)	ND (1.0)	ND (1.0)	ND (1.0)	NA
	01/17/18	ND (1.0)	ND (1.0)	ND (1.0)	ND (1.0)	ND (1.0)	ND (1.0)	ND (1.0)	NA
	05/04/20	ND (1.0)	ND (1.0)	ND (1.0)	ND (1.0)	ND (1.0)	ND (1.0)	ND (1.0)	NA
	11/20/20	ND (1.0)	ND (1.0)	ND (1.0)	ND (1.0)	ND (1.0)	ND (1.0)	ND (1.0)	ND (0.019)
	07/28/21	ND (1.0)	ND (1.0)	ND (1.0)	ND (1.0)	ND (1.0)	ND (1.0)	ND (1.0)	NA
	12/13/21	ND (1.0)	ND (1.0)	ND (1.0)	ND (1.0)	ND (1.0)	ND (1.0)	ND (1.0)	NA
	06/06/22	ND (1.0)	ND (1.0)	ND (1.0)	ND (1.0)	ND (1.0)	ND (1.0)	ND (1.0)	NA
	12/21/22	Well not sampled - blocked @ 13.50 feet bgs							

Note:

All units expressed in µg/L (PPB)

ND () - Not Detected Above Limit of Quantitation (limit in µg/l)

MCL - Maximum Contaminant Level

NA - Not Analyzed

Jash Management LLC, UST Permit #09928
Table 4 – Groundwater Analytical Data (Current & Historical)
December 21, 2022

Monitor Well ID	Date Sampled	Benzene	Toluene	Ethyl-benzene	Total Xylenes	Naphthalene	MTBE	1,2-DCA	EDB
RBSLs	---	5.0	1,000	700	10,000	25	40	5 (MCL)	0.05
MW-20	05/04/09	ND (1.0)	ND (1.0)	ND (1.0)	ND (1.0)	ND (1.0)	ND (1.0)	ND (1.0)	ND (0.019)
	04/22/14	ND (1.0)	ND (1.0)	ND (1.0)	ND (1.0)	ND (1.0)	ND (1.0)	ND (1.0)	NA
	09/18/14	Well not sampled							
	09/09/15	ND (1.0)	ND (1.0)	ND (1.0)	ND (1.0)	ND (1.0)	ND (1.0)	ND (1.0)	NA
	07/20/17	ND (1.0)	ND (1.0)	ND (1.0)	ND (1.0)	ND (1.0)	ND (1.0)	ND (1.0)	NA
	01/17/18	ND (1.0)	ND (1.0)	ND (1.0)	ND (1.0)	ND (1.0)	ND (1.0)	ND (1.0)	NA
	05/04/20	ND (1.0)	ND (1.0)	ND (1.0)	ND (1.0)	ND (1.0)	ND (1.0)	ND (1.0)	NA
	11/20/20	Well not requested to be sampled during this event							
	07/28/21	ND (1.0)	ND (1.0)	ND (1.0)	ND (1.0)	ND (1.0)	ND (1.0)	ND (1.0)	NA
	12/13/21	Well not requested to be sampled during this event							
	06/06/22	ND (1.0)	ND (1.0)	ND (1.0)	ND (1.0)	ND (1.0)	ND (1.0)	ND (1.0)	NA
	12/21/22	Well not requested to be sampled during this event							
MW-21	05/05/09	ND (1.0)	ND (1.0)	ND (1.0)	ND (1.0)	ND (1.0)	ND (1.0)	ND (1.0)	ND (0.020)
	04/22/14	ND (1.0)	ND (1.0)	ND (1.0)	ND (1.0)	ND (1.0)	ND (1.0)	ND (1.0)	NA
	09/18/14	Well not sampled							
	09/09/15	ND (1.0)	ND (1.0)	ND (1.0)	ND (1.0)	ND (1.0)	ND (1.0)	ND (1.0)	NA
	07/21/17	ND (1.0)	ND (1.0)	ND (1.0)	ND (1.0)	ND (1.0)	ND (1.0)	ND (1.0)	NA
	01/18/18	ND (1.0)	ND (1.0)	ND (1.0)	ND (1.0)	ND (1.0)	ND (1.0)	ND (1.0)	NA
	05/05/20	ND (1.0)	ND (1.0)	ND (1.0)	ND (1.0)	ND (1.0)	ND (1.0)	ND (1.0)	NA
	11/20/20	Well not requested to be sampled during this event							
	07/28/21	ND (1.0)	ND (1.0)	ND (1.0)	ND (1.0)	ND (1.0)	ND (1.0)	ND (1.0)	NA
	12/13/21	Well not requested to be sampled during this event							
	06/06/22	ND (1.0)	ND (1.0)	ND (1.0)	ND (1.0)	ND (1.0)	ND (1.0)	ND (1.0)	NA
	12/21/22	Well not requested to be sampled during this event							

Note:

All units expressed in µg/L (PPB)

ND () - Not Detected Above Limit of Quantitation (limit in µg/l)

MCL - Maximum Contaminant Level

NA - Not Analyzed

Jash Management LLC, UST Permit #09928
Table 4 – Groundwater Analytical Data (Current & Historical)
 December 21, 2022

Monitor Well ID	Date Sampled	Benzene	Toluene	Ethyl-benzene	Total Xylenes	Naphthalene	MTBE	1,2-DCA	EDB
RBSLs	---	5.0	1,000	700	10,000	25	40	5 (MCL)	0.05
MW-22	05/05/09	ND (1.0)	ND (1.0)	ND (1.0)	ND (1.0)	ND (1.0)	ND (1.0)	ND (1.0)	ND (0.021)
	04/22/14	ND (1.0)	ND (1.0)	ND (1.0)	ND (1.0)	ND (1.0)	ND (1.0)	ND (1.0)	NA
	09/18/14	Well not sampled							
	09/09/15	Well not located							
	07/20/17	Well not located							
	01/18/18	Well not accessible - debris/trailer blocking well							
	05/05/20	Well not located							
	11/20/20	Well not requested to be sampled during this event							
	07/28/21	Well not located							
	12/13/21	Well not requested to be sampled during this event							
	06/06/22	Well not located							
	12/21/22	Well not requested to be sampled during this event							
MW-23	05/06/09	ND (1.0)	ND (1.0)	ND (1.0)	ND (1.0)	ND (1.0)	ND (1.0)	ND (1.0)	ND (0.019)
	04/22/14	ND (1.0)	ND (1.0)	ND (1.0)	ND (1.0)	ND (1.0)	ND (1.0)	ND (1.0)	NA
	09/18/14	Well not sampled							
	09/09/15	ND (1.0)	ND (1.0)	ND (1.0)	ND (1.0)	ND (1.0)	ND (1.0)	ND (1.0)	NA
	07/21/17	ND (1.0)	ND (1.0)	ND (1.0)	ND (1.0)	ND (1.0)	ND (1.0)	ND (1.0)	NA
	01/18/18	ND (1.0)	ND (1.0)	ND (1.0)	ND (1.0)	ND (1.0)	ND (1.0)	ND (1.0)	NA
	05/05/20	ND (1.0)	ND (1.0)	ND (1.0)	ND (1.0)	ND (1.0)	ND (1.0)	ND (1.0)	NA
	11/20/20	Well not requested to be sampled during this event							
	07/28/21	ND (1.0)	ND (1.0)	ND (1.0)	ND (1.0)	ND (1.0)	ND (1.0)	ND (1.0)	NA
	12/13/21	Well not requested to be sampled during this event							
	06/06/22	ND (1.0)	ND (1.0)	ND (1.0)	ND (1.0)	ND (1.0)	ND (1.0)	ND (1.0)	NA
	12/21/22	Well not requested to be sampled during this event							

Note:

All units expressed in µg/L (PPB)

ND () - Not Detected Above Limit of Quantitation (limit in µg/l)

MCL - Maximum Contaminant Level

NA - Not Analyzed

Jash Management LLC, UST Permit #09928

Table 4 – Groundwater Analytical Data (Current & Historical)

December 21, 2022

Monitor Well ID	Date Sampled	Benzene	Toluene	Ethylbenzene	Total Xylenes	Naphthalene	MTBE	1,2-DCA	EDB
RBSLs	---	5.0	1,000	700	10,000	25	40	5 (MCL)	0.05
MW-24	05/06/09	ND (1.0)	ND (1.0)	ND (1.0)	ND (1.0)	ND (1.0)	ND (1.0)	ND (1.0)	ND (0.019)
	04/22/14	ND (1.0)	ND (1.0)	ND (1.0)	ND (1.0)	ND (1.0)	ND (1.0)	ND (1.0)	NA
	09/18/14	Well not sampled							
	09/09/15	Well not located							
	07/20/17	Well not located							
	01/17/18	ND (1.0)	ND (1.0)	ND (1.0)	ND (1.0)	ND (1.0)	ND (1.0)	ND (1.0)	NA
	05/05/20	ND (1.0)	ND (1.0)	ND (1.0)	ND (1.0)	ND (1.0)	ND (1.0)	ND (1.0)	NA
	11/20/20	Well not requested to be sampled during this event							
	07/28/21	Well not located							
	12/13/21	Well not requested to be sampled during this event							
	06/06/22	ND (1.0)	ND (1.0)	ND (1.0)	ND (1.0)	ND (1.0)	ND (1.0)	ND (1.0)	NA
	12/21/22	Well not requested to be sampled during this event							
MW-25	05/06/09	ND (1.0)	ND (1.0)	ND (1.0)	ND (1.0)	ND (1.0)	ND (1.0)	ND (1.0)	ND (0.020)
	04/22/14	ND (1.0)	ND (1.0)	ND (1.0)	ND (1.0)	ND (1.0)	ND (1.0)	ND (1.0)	NA
	09/18/14	Well not sampled							
	09/09/15	ND (1.0)	ND (1.0)	ND (1.0)	ND (1.0)	ND (1.0)	ND (1.0)	ND (1.0)	NA
	07/21/17	ND (1.0)	ND (1.0)	ND (1.0)	ND (1.0)	ND (1.0)	1.3	ND (1.0)	NA
	01/17/18	ND (1.0)	ND (1.0)	ND (1.0)	ND (1.0)	ND (1.0)	ND (1.0)	ND (1.0)	NA
	05/05/20	ND (1.0)	ND (1.0)	ND (1.0)	ND (1.0)	ND (1.0)	ND (1.0)	ND (1.0)	NA
	11/20/20	Well not requested to be sampled during this event							
	07/28/21	ND (1.0)	ND (1.0)	ND (1.0)	ND (1.0)	ND (1.0)	ND (1.0)	ND (1.0)	NA
	12/13/21	Well not requested to be sampled during this event							
	06/06/22	ND (1.0)	ND (1.0)	ND (1.0)	ND (1.0)	ND (1.0)	ND (1.0)	ND (1.0)	NA
	12/21/22	Well not requested to be sampled during this event							

Note:

All units expressed in µg/L (PPB)

ND () - Not Detected Above Limit of Quantitation (limit in µg/l)

MCL - Maximum Contaminant Level

NA - Not Analyzed

Jash Management LLC, UST Permit #09928
Table 4 – Groundwater Analytical Data (Current & Historical)
 December 21, 2022

Monitor Well ID	Date Sampled	Benzene	Toluene	Ethyl-benzene	Total Xylenes	Naphthalene	MTBE	1,2-DCA	EDB
RBSLs	---	5.0	1,000	700	10,000	25	40	5 (MCL)	0.05
PW-1	05/06/09	2.1	12	1.0	5.0	ND (1.0)	ND (1.0)	ND (1.0)	ND (0.019)
	04/21/14	ND (1.0)	ND (1.0)	ND (1.0)	ND (1.0)	ND (1.0)	ND (1.0)	ND (1.0)	NA
	09/18/14	Well not sampled							
	09/09/15	ND (1.0)	ND (1.0)	ND (1.0)	ND (1.0)	ND (1.0)	ND (1.0)	ND (1.0)	NA
	07/20/17	ND (1.0)	ND (1.0)	ND (1.0)	ND (1.0)	ND (1.0)	ND (1.0)	ND (1.0)	NA
	01/17/18	ND (1.0)	ND (1.0)	ND (1.0)	ND (1.0)	ND (1.0)	ND (1.0)	ND (1.0)	NA
	05/05/20	ND (1.0)	ND (1.0)	ND (1.0)	ND (1.0)	ND (1.0)	ND (1.0)	ND (1.0)	NA
	11/20/20	Well not requested to be sampled during this event							
	07/29/21	ND (1.0)	ND (1.0)	ND (1.0)	ND (1.0)	ND (1.0)	ND (1.0)	ND (1.0)	NA
	12/13/21	Well not requested to be sampled during this event							
	06/06/22	ND (1.0)	ND (1.0)	ND (1.0)	ND (1.0)	ND (1.0)	ND (1.0)	ND (1.0)	NA
	12/21/22	Well not requested to be sampled during this event							
PW-2	05/06/09	ND (1.0)	ND (1.0)	ND (1.0)	ND (1.0)	ND (1.0)	ND (1.0)	ND (1.0)	ND (0.020)
	04/21/14	ND (1.0)	ND (1.0)	ND (1.0)	ND (1.0)	ND (1.0)	ND (1.0)	ND (1.0)	NA
	09/18/14	Well not sampled							
	09/10/15	ND (1.0)	ND (1.0)	ND (1.0)	ND (1.0)	ND (1.0)	ND (1.0)	ND (1.0)	NA
	07/20/17	ND (1.0)	ND (1.0)	ND (1.0)	ND (1.0)	ND (1.0)	ND (1.0)	ND (1.0)	NA
	01/17/18	ND (1.0)	ND (1.0)	ND (1.0)	ND (1.0)	ND (1.0)	ND (1.0)	ND (1.0)	NA
	05/05/20	ND (1.0)	ND (1.0)	ND (1.0)	ND (1.0)	ND (1.0)	ND (1.0)	ND (1.0)	NA
	11/20/20	Well not requested to be sampled during this event							
	07/28/21	ND (1.0)	ND (1.0)	ND (1.0)	ND (1.0)	ND (1.0)	ND (1.0)	ND (1.0)	NA
	12/13/21	Well not requested to be sampled during this event							
	06/06/22	Well not located - possibly destroyed (owner stated new grading occurred on property)							
	12/21/22	Well not requested to be sampled during this event							

Note:

All units expressed in µg/L (PPB)

ND () - Not Detected Above Limit of Quantitation (limit in µg/l)

MCL - Maximum Contaminant Level

NA - Not Analyzed

Jash Management LLC, UST Permit #09928

Table 4 – Groundwater Analytical Data (Current & Historical)

December 21, 2022

Monitor Well ID	Date Sampled	Benzene	Toluene	Ethyl-benzene	Total Xylenes	Naphthalene	MTBE	1,2-DCA	EDB
RBSLs	--	5.0	1,000	700	10,000	25	40	5 (MCL)	0.05
WW-1	04/21/14	ND (1.0)	ND (1.0)	ND (1.0)	ND (1.0)	ND (1.0)	ND (1.0)	ND (1.0)	NA
	09/18/14	Well not sampled							
	09/09/15	ND (1.0)	ND (1.0)	ND (1.0)	ND (1.0)	ND (1.0)	ND (1.0)	ND (1.0)	NA
	07/21/17	ND (0.50)	ND (0.50)	ND (0.50)	ND (0.50)	ND (0.50)	ND (0.50)	ND (0.50)	NA
	01/18/18	ND (0.50)	ND (0.50)	ND (0.50)	ND (0.50)	ND (0.50)	ND (0.50)	ND (0.50)	NA
	05/05/20	ND (0.50)	ND (0.50)	ND (0.50)	ND (0.50)	ND (0.50)	ND (0.50)	ND (0.50)	ND (0.0097)
	11/20/20	ND (0.50)	ND (0.50)	ND (0.50)	ND (0.50)	ND (0.50)	ND (0.50)	ND (0.50)	ND (0.0097)
	07/28/21	ND (0.50)	ND (0.50)	ND (0.50)	2.8	ND (0.50)	ND (0.50)	ND (0.50)	NA
	12/13/21	ND (0.50)	ND (0.50)	ND (0.50)	ND (0.50)	ND (0.50)	ND (0.50)	ND (0.50)	NA
	06/06/22	ND (0.50)	ND (0.50)	ND (0.50)	ND (0.50)	ND (0.50)	ND (0.50)	ND (0.50)	NA
	12/21/22	ND (0.50)	ND (0.50)	ND (0.50)	ND (0.50)	ND (0.50)	ND (0.50)	ND (0.50)	NA
WW-2	04/21/14	ND (1.0)	ND (1.0)	ND (1.0)	ND (1.0)	ND (1.0)	ND (1.0)	ND (1.0)	NA
	09/18/14	Well not sampled							
	09/09/15	ND (1.0)	ND (1.0)	ND (1.0)	ND (1.0)	1.1	ND (1.0)	ND (1.0)	NA
	07/21/17	ND (0.50)	ND (0.50)	ND (0.50)	ND (0.50)	ND (0.50)	ND (0.50)	ND (0.50)	NA
	01/18/18	ND (0.50)	ND (0.50)	ND (0.50)	ND (0.50)	ND (0.50)	ND (0.50)	ND (0.50)	NA
	05/05/20	ND (0.50)	ND (0.50)	ND (0.50)	ND (0.50)	ND (0.50)	ND (0.50)	ND (0.50)	ND (0.0096)
	11/20/20	ND (0.50)	ND (0.50)	ND (0.50)	ND (0.50)	ND (0.50)	ND (0.50)	ND (0.50)	ND (0.0095)
	07/28/21	ND (0.50)	ND (0.50)	ND (0.50)	ND (0.50)	ND (0.50)	ND (0.50)	ND (0.50)	NA
	12/13/21	ND (0.50)	ND (0.50)	ND (0.50)	ND (0.50)	ND (0.50)	ND (0.50)	ND (0.50)	NA
	06/06/22	ND (0.50)	ND (0.50)	ND (0.50)	ND (0.50)	ND (0.50)	ND (0.50)	ND (0.50)	NA
	12/21/22	ND (0.50)	ND (0.50)	ND (0.50)	ND (0.50)	ND (0.50)	ND (0.50)	ND (0.50)	NA

Note: All units expressed in µg/L (PPB)
 ND () - Not Detected Above Limit of Quantitation (limit in µg/l)

MCL - Maximum Contaminant Level
 NA - Not Analyzed

Jash Management LLC, UST Permit #09928

Table 4 – Groundwater Analytical Data (Current & Historical)

December 21, 2022

Monitor Well ID	Date Sampled	Benzene	Toluene	Ethyl-benzene	Total Xylenes	Naphthalene	MTBE	1,2-DCA	EDB
RBSLs	---	5.0	1,000	700	10,000	25	40	5 (MCL)	0.05
WW-3	04/21/14	ND (1.0)	ND (1.0)	ND (1.0)	ND (1.0)	ND (1.0)	ND (1.0)	ND (1.0)	NA
	09/18/14	Well not sampled							
	09/09/15	ND (1.0)	ND (1.0)	ND (1.0)	ND (1.0)	ND (1.0)	ND (1.0)	ND (1.0)	NA
	07/21/17	ND (0.50)	ND (0.50)	ND (0.50)	ND (0.50)	ND (0.50)	ND (0.50)	ND (0.50)	NA
	01/18/18	ND (0.50)	ND (0.50)	ND (0.50)	ND (0.50)	ND (0.50)	ND (0.50)	ND (0.50)	NA
	05/05/20	ND (0.50)	ND (0.50)	ND (0.50)	ND (0.50)	ND (0.50)	ND (0.50)	ND (0.50)	ND (0.0096)
	11/20/20	ND (0.50)	ND (0.50)	ND (0.50)	ND (0.50)	ND (0.50)	ND (0.50)	ND (0.50)	ND (0.0095)
	07/28/21	ND (0.50)	ND (0.50)	ND (0.50)	ND (0.50)	ND (0.50)	ND (0.50)	ND (0.50)	NA
	12/13/21	ND (0.50)	ND (0.50)	ND (0.50)	ND (0.50)	ND (0.50)	ND (0.50)	ND (0.50)	NA
	06/06/22	ND (0.50)	ND (0.50)	ND (0.50)	ND (0.50)	ND (0.50)	ND (0.50)	ND (0.50)	NA
	12/21/22	ND (0.50)	ND (0.50)	ND (0.50)	ND (0.50)	ND (0.50)	ND (0.50)	ND (0.50)	NA
WW-4	04/21/14	ND (1.0)	ND (1.0)	ND (1.0)	ND (1.0)	ND (1.0)	ND (1.0)	ND (1.0)	NA
	09/18/14	Well not sampled							
	09/09/15	ND (1.0)	ND (1.0)	ND (1.0)	ND (1.0)	ND (1.0)	ND (1.0)	ND (1.0)	NA
	07/21/17	ND (0.50)	ND (0.50)	ND (0.50)	ND (0.50)	ND (0.50)	ND (0.50)	ND (0.50)	NA
	01/17/18	Well not sampled - denied access to property							
	05/05/20	Well not sampled - denied access to property							
	11/20/20	Well not sampled - denied access to property							
	07/28/21	Well not sampled - denied access to property							
	12/13/21	Well not sampled - denied access to property							
	06/06/22	Well not sampled - denied access to property							
	12/21/22	Well not sampled - denied access to property							

Note: All units expressed in µg/L (PPB)

ND () - Not Detected Above Limit of Quantitation (limit in µg/l)

MCL - Maximum Contaminant Level

NA - Not Analyzed

Jash Management LLC, UST Permit #09928
Table 4 – Groundwater Analytical Data (Current & Historical)
December 21, 2022

Monitor Well ID	Date Sampled	Benzene	Toluene	Ethyl-benzene	Total Xylenes	Naphth-alene	MTBE	1,2-DCA	EDB
RBSLs	---	5.0	1,000	700	10,000	25	40	5 (MCL)	0.05
WW-5	04/21/14	ND (1.0)	ND (1.0)	ND (1.0)	ND (1.0)	ND (1.0)	ND (1.0)	ND (1.0)	NA
	09/18/14	Well not sampled							
	09/09/15	ND (1.0)	ND (1.0)	ND (1.0)	ND (1.0)	ND (1.0)	ND (1.0)	ND (1.0)	NA
	07/21/17	ND (0.50)	ND (0.50)	ND (0.50)	ND (0.50)	ND (0.50)	ND (0.50)	ND (0.50)	NA
	01/18/18	ND (0.50)	ND (0.50)	ND (0.50)	ND (0.50)	ND (0.50)	ND (0.50)	ND (0.50)	NA
	05/05/20	ND (0.50)	ND (0.50)	ND (0.50)	ND (0.50)	ND (0.50)	ND (0.50)	ND (0.50)	ND (0.0096)
	11/20/20	ND (0.50)	ND (0.50)	ND (0.50)	ND (0.50)	ND (0.50)	ND (0.50)	ND (0.50)	ND (0.0097)
	07/28/21	ND (0.50)	ND (0.50)	ND (0.50)	ND (0.50)	ND (0.50)	ND (0.50)	ND (0.50)	NA
	12/13/21	ND (0.50)	ND (0.50)	ND (0.50)	ND (0.50)	ND (0.50)	ND (0.50)	ND (0.50)	NA
	06/06/22	ND (0.50)	ND (0.50)	ND (0.50)	ND (0.50)	ND (0.50)	ND (0.50)	ND (0.50)	NA
	12/21/22	Well not sampled - well not in service no power to residence							
WW-7	04/21/14	ND (1.0)	ND (1.0)	ND (1.0)	ND (1.0)	ND (1.0)	ND (1.0)	ND (1.0)	NA
	09/18/14	Well not sampled							
	09/09/15	ND (1.0)	ND (1.0)	ND (1.0)	ND (1.0)	ND (1.0)	ND (1.0)	ND (1.0)	NA
	07/21/17	ND (0.50)	ND (0.50)	ND (0.50)	ND (0.50)	ND (0.50)	ND (0.50)	ND (0.50)	NA
	01/18/18	ND (0.50)	ND (0.50)	ND (0.50)	ND (0.50)	ND (0.50)	ND (0.50)	ND (0.50)	NA
	05/05/20	ND (0.50)	ND (0.50)	ND (0.50)	ND (0.50)	ND (0.50)	ND (0.50)	ND (0.50)	ND (0.0097)
	11/20/20	ND (0.50)	ND (0.50)	ND (0.50)	ND (0.50)	ND (0.50)	ND (0.50)	ND (0.50)	ND (0.0096)
	07/28/21	ND (0.50)	ND (0.50)	ND (0.50)	ND (0.50)	ND (0.50)	ND (0.50)	ND (0.50)	NA
	12/13/21	ND (0.50)	ND (0.50)	ND (0.50)	ND (0.50)	ND (0.50)	ND (0.50)	ND (0.50)	NA
	06/06/22	ND (0.50)	ND (0.50)	ND (0.50)	ND (0.50)	ND (0.50)	ND (0.50)	ND (0.50)	NA
	12/21/22	ND (0.50)	ND (0.50)	ND (0.50)	ND (0.50)	ND (0.50)	ND (0.50)	ND (0.50)	NA

Note: All units expressed in µg/L (PPB)
ND () - Not Detected Above Limit of Quantitation (limit in µg/l)

MCL - Maximum Contaminant Level
NA - Not Analyzed

Jash Management LLC, UST Permit #09928

Table 4 – Groundwater Analytical Data (Current & Historical)

December 21, 2022

Monitor Well ID	Date Sampled	Benzene	Toluene	Ethyl-benzene	Total Xylenes	Naphth-alene	MTBE	1,2-DCA	EDB
RBSLs		5.0	1,000	700	10,000	25	40	5 (MCL)	0.05
WW-8	01/18/18	ND (0.50)	ND (0.50)	ND (0.50)	ND (0.50)	ND (0.50)	ND (0.50)	ND (0.50)	NA
	05/05/20	Well not sampled - no power to well & the building is currently for sale							
	11/20/20	ND (0.50)	ND (0.50)	ND (0.50)	ND (0.50)	ND (0.50)	ND (0.50)	ND (0.50)	ND (0.0097)
	07/28/21	ND (0.50)	ND (0.50)	ND (0.50)	ND (0.50)	ND (0.50)	ND (0.50)	ND (0.50)	NA
	12/13/21	ND (0.50)	ND (0.50)	ND (0.50)	ND (0.50)	ND (0.50)	ND (0.50)	ND (0.50)	NA
	06/06/22	ND (0.50)	ND (0.50)	ND (0.50)	ND (0.50)	ND (0.50)	ND (0.50)	ND (0.50)	NA
	12/21/22	ND (0.50)	ND (0.50)	ND (0.50)	ND (0.50)	ND (0.50)	ND (0.50)	ND (0.50)	NA

Note:

All units expressed in µg/L (PPB)

ND () - Not Detected Above Limit of Quantitation (limit in µg/l)

MCL - Maximum Contaminant Level

NA - Not Analyzed

Jash Management LLC, UST Permit #09928
Table 4 – Groundwater Analytical Data (Current & Historical)
 --8 Oxygenates--
 December 21, 2022

Monitor Well ID	Date Sampled	DIPE	Ethanol	ETBA	ETBE	TAA	TAME	TBA	TBF
Action Levels		150	10,000	N/A	47	240	128	1,400	N/A
MW-1	09/18/14	Well destroyed							
MW-2	09/18/14	ND (1.0)	ND (100)	ND (20)	ND (1.0)	ND (20)	ND (10)	ND (20)	ND (5.0)
	07/20/17	ND (1.0)	ND (100)	ND (20)	ND (1.0)	ND (20)	ND (10)	ND (20)	ND (5.0)
	01/17/18	ND (1.0)	ND (100)	ND (20)	ND (1.0)	ND (20)	ND (10)	ND (20)	ND (5.0)
	05/04/20	ND (1.0)	ND (100)	ND (20)	ND (1.0)	ND (20)	ND (10)	ND (20)	ND (5.0)
	11/20/20	Well not requested to be sampled during this event							
	07/29/21	ND (1.0)	ND (100)	ND (20)	ND (1.0)	ND (20)	ND (10)	ND (20)	ND (5.0)
	12/13/21	Well not requested to be sampled during this event							
	06/06/22	Well destroyed							
MW-3	09/18/14	ND (1.0)	ND (100)	ND (20)	ND (1.0)	ND (20)	ND (10)	ND (20)	ND (5.0)
	07/20/17	ND (1.0)	ND (100)	ND (20)	ND (1.0)	ND (20)	ND (10)	ND (20)	ND (5.0)
	01/17/18	ND (1.0)	ND (100)	ND (20)	ND (1.0)	ND (20)	ND (10)	ND (20)	ND (5.0)
	05/04/20	ND (1.0)	ND (100)	ND (20)	ND (1.0)	ND (20)	ND (10)	ND (20)	ND (5.0)
	11/20/20	Well not requested to be sampled during this event							
	07/29/21	ND (1.0)	ND (100)	ND (20)	ND (1.0)	ND (20)	ND (10)	ND (20)	ND (5.0)
	12/13/21	Well not requested to be sampled during this event							
	06/06/22	ND (1.0)	ND (100)	ND (20)	ND (1.0)	ND (20)	ND (10)	ND (20)	ND (5.0)
	12/21/22	Well not requested to be sampled during this event							

Note:

All units expressed in µg/L (PPB)

N/A - Not Applicable

ND () - Not Detected Above Limit of Quantitation (limit in µg/l)

Jash Management LLC, UST Permit #09928
Table 4 – Groundwater Analytical Data (Current & Historical)
 --8 Oxygenates--
 December 21, 2022

Monitor Well ID	Date Sampled	DIPE	Ethanol	ETBA	ETBE	TAA	TAME	TBA	TBF
Action Levels	---	150	10,000	N/A	47	240	128	1,400	N/A
MW-4	09/18/14	ND (20)	ND (2,000)	ND (400)	ND (20)	ND (400)	ND (200)	ND (400)	ND (100)
	07/20/17	8.8	ND (500)	ND (100)	ND (5.0)	180	ND (50)	ND (100)	ND (25)
	01/17/18	6.4	ND (500)	ND (100)	ND (5.0)	ND (100)	ND (50)	ND (100)	ND (25)
	05/04/20	ND (5.0)	ND (500)	ND (100)	ND (5.0)	ND (100)	ND (50)	ND (100)	ND (25)
	11/20/20	ND (1.0)	ND (100)	ND (20)	ND (1.0)	24	ND (10)	ND (20)	ND (5.0)
	07/29/21	1.6	ND (100)	ND (20)	ND (1.0)	54	ND (10)	ND (20)	ND (5.0)
	12/13/21	10	ND (100)	ND (20)	ND (1.0)	280	ND (10)	46	ND (5.0)
	06/06/22	5.4	ND (100)	ND (20)	ND (1.0)	22	ND (10)	ND (20)	ND (5.0)
	12/21/22	2.6	ND (100)	ND (20)	ND (1.0)	ND (20)	ND (10)	ND (20)	ND (5.0)
MW-5R	09/18/14	ND (1.0)	ND (100)	ND (20)	ND (1.0)	ND (20)	ND (10)	ND (20)	ND (5.0)
	07/20/17	ND (1.0)	ND (100)	ND (20)	ND (1.0)	ND (20)	ND (10)	ND (20)	ND (5.0)
	01/17/18	ND (1.0)	ND (100)	ND (20)	ND (1.0)	ND (20)	ND (10)	ND (20)	ND (5.0)
	05/04/20	ND (1.0)	ND (100)	ND (20)	ND (1.0)	ND (20)	ND (10)	ND (20)	ND (5.0)
	11/20/20	ND (5.0)	ND (500)	ND (100)	ND (5.0)	ND (100)	ND (50)	ND (100)	ND (25)
	07/29/21	ND (1.0)	ND (100)	ND (20)	ND (1.0)	ND (20)	ND (10)	ND (20)	ND (5.0)
	12/13/21	ND (1.0)	ND (100)	ND (20)	ND (1.0)	ND (20)	ND (10)	ND (20)	ND (5.0)
	06/06/22	ND (1.0)	ND (100)	ND (20)	ND (1.0)	ND (20)	ND (10)	ND (20)	ND (5.0)
	12/21/22	ND (1.0)	ND (100)	ND (20)	ND (1.0)	ND (20)	ND (10)	ND (20)	ND (5.0)

Note:

All units expressed in µg/L (PPB)

N/A - Not Applicable

ND () - Not Detected Above Limit of Quantitation (limit in µg/l)

Jash Management LLC, UST Permit #09928
Table 4 – Groundwater Analytical Data (Current & Historical)
 --8 Oxygenates--
 December 21, 2022

Monitor Well ID	Date Sampled	DIPE	Ethanol	ETBA	ETBE	TAA	TAME	TBA	TBF
Action Levels		150	10,000	N/A	47	240	128	1,400	N/A
MW-6	09/18/14	ND (20)	ND (2,000)	ND (400)	ND (20)	ND (400)	ND (200)	ND (400)	ND (100)
	07/20/17	27	ND (2,000)	ND (400)	ND (20)	ND (400)	ND (200)	ND (400)	ND (100)
	05/04/20	47	ND (1,000)	ND (200)	ND (10)	620	ND (100)	230	ND (50)
	11/20/20	76	ND (2,000)	ND (400)	ND (20)	1,200	ND (200)	ND (400)	ND (100)
	07/29/21	68	ND (2,000)	ND (400)	ND (20)	ND (400)	ND (200)	ND (400)	ND (100)
	12/13/21	34	ND (500)	ND (100)	ND (5.0)	300	ND (50)	110	ND (25)
	06/06/22	ND (50)	ND (5,000)	ND (1,000)	ND (50)	ND (1,000)	ND (500)	ND (1,000)	ND (250)
	12/21/22	ND (20)	ND (2,000)	ND (400)	ND (20)	ND (400)	ND (200)	ND (400)	ND (100)
MW-7	09/18/14	ND (1.0)	ND (100)	ND (20)	ND (1.0)	ND (20)	ND (10)	ND (20)	ND (5.0)
	07/20/17	ND (1.0)	ND (100)	ND (20)	ND (1.0)	ND (20)	ND (10)	ND (20)	ND (5.0)
	01/17/18	ND (1.0)	ND (100)	ND (20)	ND (1.0)	ND (20)	ND (10)	ND (20)	ND (5.0)
	05/04/20	ND (1.0)	ND (100)	ND (20)	ND (1.0)	ND (20)	ND (10)	ND (20)	ND (5.0)
	11/20/20	Well not requested to be sampled during this event							
	07/29/21	ND (1.0)	ND (100)	ND (20)	ND (1.0)	ND (20)	ND (10)	ND (20)	ND (5.0)
	12/13/21	Well not requested to be sampled during this event							
	06/06/22	Well not sampled - unable to open well due to a bolt rounded off							
	12/21/22	Well not requested to be sampled during this event							

Note:

All units expressed in µg/L (PPB)

N/A - Not Applicable

ND () - Not Detected Above Limit of Quantitation (limit in µg/l)

Jash Management LLC, UST Permit #09928
Table 4 – Groundwater Analytical Data (Current & Historical)
 --8 Oxygenates--
 December 21, 2022

Monitor Well ID	Date Sampled	DIPE	Ethanol	ETBA	ETBE	TAA	TAME	TBA	TBF
Action Levels		150	10,000	N/A	47	240	128	1,400	N/A
MW-8	09/18/14	ND (1.0)	ND (100)	ND (20)	ND (1.0)	ND (20)	ND (10)	ND (20)	ND (5.0)
	07/20/17	ND (1.0)	ND (100)	ND (20)	ND (1.0)	ND (20)	ND (10)	ND (20)	ND (5.0)
	01/17/18	ND (1.0)	ND (100)	ND (20)	ND (1.0)	ND (20)	ND (10)	ND (20)	ND (5.0)
	05/05/20	Well not located - possibly paved over							
	11/20/20	Well not requested to be sampled during this event							
	07/29/21	ND (1.0)	ND (100)	ND (20)	ND (1.0)	ND (20)	ND (10)	ND (20)	ND (5.0)
	12/13/21	Well not requested to be sampled during this event							
	06/06/22	ND (1.0)	ND (100)	ND (20)	ND (1.0)	ND (20)	ND (10)	ND (20)	ND (5.0)
	12/21/22	Well not requested to be sampled during this event							
MW-12	09/18/14	ND (1.0)	ND (100)	ND (20)	ND (1.0)	ND (20)	ND (10)	ND (20)	ND (5.0)
	07/20/17	ND (1.0)	ND (100)	ND (20)	ND (1.0)	ND (20)	ND (10)	ND (20)	ND (5.0)
	01/17/18	ND (1.0)	ND (100)	ND (20)	ND (1.0)	ND (20)	ND (10)	ND (20)	ND (5.0)
	05/05/20	ND (1.0)	ND (100)	ND (20)	ND (1.0)	ND (20)	ND (10)	ND (20)	ND (5.0)
	11/20/20	Well not requested to be sampled during this event							
	07/28/21	ND (1.0)	ND (100)	ND (20)	ND (1.0)	ND (20)	ND (10)	ND (20)	ND (5.0)
	12/13/21	Well not requested to be sampled during this event							
	06/06/22	ND (1.0)	ND (100)	ND (20)	ND (1.0)	ND (20)	ND (10)	ND (20)	ND (5.0)
	12/21/22	Well not requested to be sampled during this event							
MW-13	09/18/14	ND (1.0)	ND (100)	ND (20)	ND (1.0)	ND (20)	ND (10)	ND (20)	ND (5.0)
	07/20/17	ND (1.0)	ND (100)	ND (20)	ND (1.0)	ND (20)	ND (10)	ND (20)	ND (5.0)
	01/17/18	ND (1.0)	ND (100)	ND (20)	ND (1.0)	ND (20)	ND (10)	ND (20)	ND (5.0)
	05/04/20	Well abandoned							

Note:

All units expressed in µg/L (PPB)

N/A - Not Applicable

ND () - Not Detected Above Limit of Quantitation (limit in µg/l)

Jash Management LLC, UST Permit #09928
Table 4 – Groundwater Analytical Data (Current & Historical)
 --8 Oxygenates--
 December 21, 2022

Monitor Well ID	Date Sampled	DIPE	Ethanol	ETBA	ETBE	TAA	TAME	TBA	TBF
Action Levels	---	150	10,000	N/A	47	240	128	1,400	N/A
MW-14	09/18/14	ND (1.0)	ND (100)	ND (20)	ND (1.0)	ND (20)	ND (10)	ND (20)	ND (5.0)
	07/20/17	ND (1.0)	120	ND (20)	ND (1.0)	ND (20)	ND (10)	ND (20)	ND (5.0)
	01/17/18	ND (1.0)	ND (100)	ND (20)	ND (1.0)	ND (20)	ND (10)	ND (20)	ND (5.0)
	05/04/20	ND (1.0)	ND (100)	ND (20)	ND (1.0)	ND (20)	ND (10)	ND (20)	ND (5.0)
	11/20/20	Well not requested to be sampled during this event							
	07/29/21	ND (1.0)	ND (100)	ND (20)	ND (1.0)	ND (20)	ND (10)	ND (20)	ND (5.0)
	12/13/21	Well not requested to be sampled during this event							
	06/06/22	ND (1.0)	ND (100)	ND (20)	ND (1.0)	ND (20)	ND (10)	ND (20)	ND (5.0)
	12/21/22	Well not requested to be sampled during this event							
MW-15	09/18/14	ND (5.0)	ND (500)	ND (100)	ND (5.0)	ND (100)	ND (50)	ND (100)	ND (25)
	07/20/17	ND (1.0)	ND (100)	ND (20)	ND (1.0)	ND (20)	ND (10)	ND (20)	ND (5.0)
	01/18/18	ND (1.0)	ND (100)	ND (20)	ND (1.0)	ND (20)	ND (10)	ND (20)	ND (5.0)
	05/04/20	ND (1.0)	ND (100)	ND (20)	ND (1.0)	ND (20)	ND (10)	ND (20)	ND (5.0)
	11/20/20	ND (1.0)	ND (100)	ND (20)	ND (1.0)	ND (20)	ND (10)	ND (20)	ND (5.0)
	07/28/21	ND (1.0)	ND (100)	ND (20)	ND (1.0)	ND (20)	ND (10)	ND (20)	ND (5.0)
	12/13/21	ND (1.0)	ND (100)	ND (20)	ND (1.0)	ND (20)	ND (10)	ND (20)	ND (5.0)
	06/06/22	ND (1.0)	ND (100)	ND (20)	ND (1.0)	ND (20)	ND (10)	ND (20)	ND (5.0)
	12/21/22	ND (1.0)	ND (100)	ND (20)	ND (1.0)	ND (20)	ND (10)	ND (20)	ND (5.0)

Note:

All units expressed in µg/L (PPB)

N/A - Not Applicable

ND () - Not Detected Above Limit of Quantitation (limit in µg/l)

Jash Management LLC, UST Permit #09928
Table 4 – Groundwater Analytical Data (Current & Historical)
 --8 Oxygenates--
 December 21, 2022

Monitor Well ID	Date Sampled	DIPE	Ethanol	ETBA	ETBE	TAA	TAME	TBA	TBF
Action Levels	---	150	10,000	N/A	47	240	128	1,400	N/A
MW-16	09/18/14	ND (1.0)	ND (100)	ND (20)	ND (1.0)	ND (20)	ND (10)	ND (20)	ND (5.0)
	07/20/17	Well not sampled - covered by car							
	01/18/18	ND (1.0)	ND (100)	ND (20)	ND (1.0)	ND (20)	ND (10)	ND (20)	ND (5.0)
	05/05/20	ND (1.0)	ND (100)	ND (20)	ND (1.0)	ND (20)	ND (10)	ND (20)	ND (5.0)
	11/20/20	Well not requested to be sampled during this event							
	07/28/21	ND (1.0)	ND (100)	ND (20)	ND (1.0)	ND (20)	ND (10)	ND (20)	ND (5.0)
	12/13/21	Well not requested to be sampled during this event							
	06/06/22	ND (1.0)	ND (100)	ND (20)	ND (1.0)	ND (20)	ND (10)	ND (20)	ND (5.0)
	12/21/22	Well not requested to be sampled during this event							
MW-17	09/18/14	ND (1.0)	ND (100)	ND (20)	ND (1.0)	ND (20)	ND (10)	ND (20)	ND (5.0)
	07/20/17	ND (1.0)	ND (100)	ND (20)	ND (1.0)	ND (20)	ND (10)	ND (20)	ND (5.0)
	01/17/18	ND (1.0)	ND (100)	ND (20)	ND (1.0)	ND (20)	ND (10)	ND (20)	ND (5.0)
	05/04/20	ND (1.0)	ND (100)	ND (20)	ND (1.0)	ND (20)	ND (10)	ND (20)	ND (5.0)
	11/20/20	Well not requested to be sampled during this event							
	07/28/21	ND (1.0)	ND (100)	ND (20)	ND (1.0)	ND (20)	ND (10)	ND (20)	ND (5.0)
	12/13/21	Well not requested to be sampled during this event							
	06/06/22	ND (1.0)	ND (100)	ND (20)	ND (1.0)	ND (20)	ND (10)	ND (20)	ND (5.0)
	12/21/22	Well not requested to be sampled during this event							

Note:

All units expressed in µg/L (PPB)

N/A - Not Applicable

ND () - Not Detected Above Limit of Quantitation (limit in µg/l)

Jash Management LLC, UST Permit #09928
Table 4 – Groundwater Analytical Data (Current & Historical)
 --8 Oxygenates--
 December 21, 2022

Monitor Well ID	Date Sampled	DIPE	Ethanol	ETBA	ETBE	TAA	TAME	TBA	TBF
Action Levels	---	150	10,000	N/A	47	240	128	1,400	N/A
MW-18	09/18/14	ND (1.0)	ND (100)	ND (20)	ND (1.0)	ND (20)	ND (10)	ND (20)	ND (5.0)
	07/20/17	ND (1.0)	ND (100)	ND (20)	ND (1.0)	ND (20)	ND (10)	ND (20)	ND (5.0)
	01/17/18	ND (1.0)	ND (100)	ND (20)	ND (1.0)	ND (20)	ND (10)	ND (20)	ND (5.0)
	05/05/20	ND (1.0)	ND (100)	ND (20)	ND (1.0)	ND (20)	ND (10)	ND (20)	ND (5.0)
	11/20/20	Well not requested to be sampled during this event							
	07/28/21	ND (1.0)	ND (100)	ND (20)	ND (1.0)	ND (20)	ND (10)	ND (20)	ND (5.0)
	12/13/21	Well not requested to be sampled during this event							
	06/06/22	Well not located - possibly destroyed (owner stated new grading occurred on property)							
	12/21/22	Well not requested to be sampled during this event							
MW-19	09/18/14	ND (1.0)	ND (100)	ND (20)	ND (1.0)	ND (20)	ND (10)	ND (20)	ND (5.0)
	07/21/17	ND (1.0)	ND (100)	ND (20)	ND (1.0)	ND (20)	ND (10)	ND (20)	ND (5.0)
	01/17/18	ND (1.0)	ND (100)	ND (20)	ND (1.0)	ND (20)	ND (10)	ND (20)	ND (5.0)
	05/04/20	ND (1.0)	ND (100)	ND (20)	ND (1.0)	ND (20)	ND (10)	ND (20)	ND (5.0)
	11/20/20	ND (1.0)	ND (100)	ND (20)	ND (1.0)	ND (20)	ND (10)	ND (20)	ND (5.0)
	07/28/21	ND (1.0)	ND (100)	ND (20)	ND (1.0)	ND (20)	ND (10)	ND (20)	ND (5.0)
	12/13/21	ND (1.0)	ND (100)	ND (20)	ND (1.0)	ND (20)	ND (10)	ND (20)	ND (5.0)
	06/06/22	ND (1.0)	ND (100)	ND (20)	ND (1.0)	ND (20)	ND (10)	ND (20)	ND (5.0)
	12/21/22	Well not sampled - blocked @ 13.50 feet bgs							

Note:

All units expressed in µg/L (PPB)

N/A - Not Applicable

ND () - Not Detected Above Limit of Quantitation (limit in µg/l)

Jash Management LLC, UST Permit #09928
Table 4 – Groundwater Analytical Data (Current & Historical)
 --8 Oxygenates--
 December 21, 2022

Monitor Well ID	Date Sampled	DIPE	Ethanol	ETBA	ETBE	TAA	TAME	TBA	TBF
Action Levels	---	150	10,000	N/A	47	240	128	1,400	N/A
MW-20	09/18/14	ND (20)	ND (2,000)	ND (400)	ND (20)	ND (400)	ND (200)	ND (400)	ND (100)
	07/20/17	ND (1.0)	ND (100)	ND (20)	ND (1.0)	ND (20)	ND (10)	ND (20)	ND (5.0)
	01/17/18	ND (1.0)	ND (100)	ND (20)	ND (1.0)	ND (20)	ND (10)	ND (20)	ND (5.0)
	05/04/20	ND (1.0)	ND (100)	ND (20)	ND (1.0)	ND (20)	ND (10)	ND (20)	ND (5.0)
	11/20/20	Well not requested to be sampled during this event							
	07/28/21	ND (1.0)	ND (100)	ND (20)	ND (1.0)	ND (20)	ND (10)	ND (20)	ND (5.0)
	12/13/21	Well not requested to be sampled during this event							
	06/06/22	ND (1.0)	ND (100)	ND (20)	ND (1.0)	ND (20)	ND (10)	ND (20)	ND (5.0)
	12/21/22	Well not requested to be sampled during this event							
MW-21	09/18/14	ND (1.0)	ND (100)	ND (20)	ND (1.0)	ND (20)	ND (10)	ND (20)	ND (5.0)
	07/21/17	ND (1.0)	ND (100)	ND (20)	ND (1.0)	ND (20)	ND (10)	ND (20)	ND (5.0)
	01/18/18	ND (1.0)	ND (100)	ND (20)	ND (1.0)	ND (20)	ND (10)	ND (20)	ND (5.0)
	05/05/20	ND (1.0)	ND (100)	ND (20)	ND (1.0)	ND (20)	ND (10)	ND (20)	ND (5.0)
	11/20/20	Well not requested to be sampled during this event							
	07/28/21	ND (1.0)	ND (100)	ND (20)	ND (1.0)	ND (20)	ND (10)	ND (20)	ND (5.0)
	12/13/21	Well not requested to be sampled during this event							
	06/06/22	ND (1.0)	ND (100)	ND (20)	ND (1.0)	ND (20)	ND (10)	ND (20)	ND (5.0)
	12/21/22	Well not requested to be sampled during this event							

Note:

All units expressed in µg/L (PPB)

N/A - Not Applicable

ND () - Not Detected Above Limit of Quantitation (limit in µg/l)

Jash Management LLC, UST Permit #09928

Table 4 – Groundwater Analytical Data (Current & Historical)

--8 Oxygenates--

December 21, 2022

Monitor Well ID	Date Sampled	DIPE	Ethanol	ETBA	ETBE	TAA	TAME	TBA	TBF
Action Levels	---	150	10,000	N/A	47	240	128	1,400	N/A
MW-22	09/18/14	Well not sampled							
	07/20/17	Well not located							
	01/18/18	Well not accessible - debris/trailer blocking well							
	05/05/20	Well not located							
	11/20/20	Well not requested to be sampled during this event							
	07/28/21	Well not located							
	12/13/21	Well not requested to be sampled during this event							
	06/06/22	Well not located							
	12/21/22	Well not requested to be sampled during this event							
MW-23	09/18/14	ND (1.0)	ND (100)	ND (20)	ND (1.0)	ND (20)	ND (10)	ND (20)	ND (5.0)
	07/21/17	ND (1.0)	ND (100)	ND (20)	ND (1.0)	ND (20)	ND (10)	ND (20)	ND (5.0)
	01/18/18	ND (1.0)	ND (100)	ND (20)	ND (1.0)	ND (20)	ND (10)	ND (20)	ND (5.0)
	05/05/20	ND (1.0)	ND (100)	ND (20)	ND (1.0)	ND (20)	ND (10)	ND (20)	ND (5.0)
	11/20/20	Well not requested to be sampled during this event							
	07/28/21	ND (1.0)	ND (100)	ND (20)	ND (1.0)	ND (20)	ND (10)	ND (20)	ND (5.0)
	12/13/21	Well not requested to be sampled during this event							
	06/06/22	ND (1.0)	ND (100)	ND (20)	ND (1.0)	ND (20)	ND (10)	ND (20)	ND (5.0)
	12/21/22	Well not requested to be sampled during this event							

Note:

All units expressed in µg/L (PPB)

N/A - Not Applicable

ND () - Not Detected Above Limit of Quantitation (limit in µg/l)

Jash Management LLC, UST Permit #09928
Table 4 – Groundwater Analytical Data (Current & Historical)
 --8 Oxygenates--
 December 21, 2022

Monitor Well ID	Date Sampled	DIPE	Ethanol	ETBA	ETBE	TAA	TAME	TBA	TBF
Action Levels	---	150	10,000	N/A	47	240	128	1,400	N/A
MW-24	09/18/14	Well not sampled							
	07/20/17	Well not located							
	01/17/18	ND (1.0)	ND (100)	ND (20)	ND (1.0)	ND (20)	ND (10)	ND (20)	ND (5.0)
	05/05/20	ND (1.0)	ND (100)	ND (20)	ND (1.0)	ND (20)	ND (10)	ND (20)	ND (5.0)
	11/20/20	Well not requested to be sampled during this event							
	07/28/21	Well not located							
	12/13/21	Well not requested to be sampled during this event							
	06/06/22	ND (1.0)	ND (100)	ND (20)	ND (1.0)	ND (20)	ND (10)	ND (20)	ND (5.0)
	12/21/22	Well not requested to be sampled during this event							
MW-25	09/18/14	ND (1.0)	ND (100)	ND (20)	ND (1.0)	ND (20)	ND (10)	ND (20)	ND (5.0)
	07/21/17	ND (1.0)	ND (100)	ND (20)	ND (1.0)	ND (20)	ND (10)	ND (20)	ND (5.0)
	01/17/18	ND (1.0)	ND (100)	ND (20)	ND (1.0)	ND (20)	ND (10)	ND (20)	ND (5.0)
	05/05/20	ND (1.0)	ND (100)	ND (20)	ND (1.0)	ND (20)	ND (10)	ND (20)	ND (5.0)
	11/20/20	Well not requested to be sampled during this event							
	07/28/21	ND (1.0)	ND (100)	ND (20)	ND (1.0)	ND (20)	ND (10)	ND (20)	ND (5.0)
	12/13/21	Well not requested to be sampled during this event							
	06/06/22	ND (1.0)	ND (100)	ND (20)	ND (1.0)	ND (20)	ND (10)	ND (20)	ND (5.0)
	12/21/22	Well not requested to be sampled during this event							

Note:

All units expressed in µg/L (PPB)

N/A - Not Applicable

ND () - Not Detected Above Limit of Quantitation (limit in µg/l)

Jash Management LLC, UST Permit #09928
Table 4 – Groundwater Analytical Data (Current & Historical)
 --8 Oxygenates--
 December 21, 2022

Monitor Well ID	Date Sampled	DIPE	Ethanol	ETBA	ETBE	TAA	TAME	TBA	TBF
Action Levels		150	10,000	N/A	47	240	128	1,400	N/A
PW-1	09/18/14	ND (1.0)	ND (100)	ND (20)	ND (1.0)	ND (20)	ND (10)	ND (20)	ND (5.0)
	07/20/17	ND (1.0)	ND (100)	ND (20)	ND (1.0)	ND (20)	ND (10)	ND (20)	ND (5.0)
	01/17/18	ND (1.0)	ND (100)	ND (20)	ND (1.0)	ND (20)	ND (10)	ND (20)	ND (5.0)
	05/05/20	ND (1.0)	ND (100)	ND (20)	ND (1.0)	ND (20)	ND (10)	ND (20)	ND (5.0)
	11/20/20	Well not requested to be sampled during this event							
	07/29/21	ND (1.0)	ND (100)	ND (20)	ND (1.0)	ND (20)	ND (10)	ND (20)	ND (5.0)
	12/13/21	Well not requested to be sampled during this event							
	06/06/22	ND (1.0)	ND (100)	ND (20)	ND (1.0)	ND (20)	ND (10)	ND (20)	ND (5.0)
	12/21/22	Well not requested to be sampled during this event							
PW-2	09/18/14	ND (1.0)	ND (100)	ND (20)	ND (1.0)	ND (20)	ND (10)	ND (20)	ND (5.0)
	07/20/17	ND (1.0)	ND (100)	ND (20)	ND (1.0)	ND (20)	ND (10)	ND (20)	ND (5.0)
	01/17/18	ND (1.0)	ND (100)	ND (20)	ND (1.0)	ND (20)	ND (10)	ND (20)	ND (5.0)
	05/05/20	ND (1.0)	ND (100)	ND (20)	ND (1.0)	ND (20)	ND (10)	ND (20)	ND (5.0)
	11/20/20	Well not requested to be sampled during this event							
	07/28/21	ND (1.0)	ND (100)	ND (20)	ND (1.0)	ND (20)	ND (10)	ND (20)	ND (5.0)
	12/13/21	Well not requested to be sampled during this event							
	06/06/22	Well not located - possibly destroyed (owner stated new grading occurred on property)							
	12/21/22	Well not requested to be sampled during this event							

Note:

All units expressed in µg/L (PPB)

N/A - Not Applicable

ND () - Not Detected Above Limit of Quantitation (limit in µg/l)

Jash Management LLC, UST Permit #09928
Table 4 – Groundwater Analytical Data (Current & Historical)
 --8 Oxygenates--
 December 21, 2022

Monitor Well ID	Date Sampled	DIPE	Ethanol	ETBA	ETBE	TAA	TAME	TBA	TBF
Action Levels		150	10,000	N/A	47	240	128	1,400	N/A
WW-1	09/18/14	ND (1.0)	ND (100)	ND (20)	ND (1.0)	ND (20)	ND (10)	ND (20)	ND (5.0)
	07/21/17	ND (1.0)	ND (100)	ND (20)	ND (1.0)	ND (20)	ND (10)	ND (20)	ND (5.0)
	01/18/18	ND (1.0)	ND (100)	ND (20)	ND (1.0)	ND (20)	ND (10)	ND (20)	ND (5.0)
	05/05/20	ND (1.0)	ND (100)	ND (20)	ND (1.0)	ND (20)	ND (10)	ND (20)	ND (5.0)
	11/20/20	ND (1.0)	ND (100)	ND (20)	ND (1.0)	ND (20)	ND (10)	ND (20)	ND (5.0)
	07/28/21	ND (1.0)	ND (100)	ND (20)	ND (1.0)	ND (20)	ND (10)	ND (20)	ND (5.0)
	12/13/21	ND (1.0)	ND (100)	ND (20)	ND (1.0)	ND (20)	ND (10)	ND (20)	ND (5.0)
	06/06/22	ND (1.0)	ND (100)	ND (20)	ND (1.0)	ND (20)	ND (10)	ND (20)	ND (5.0)
	12/21/22	ND (1.0)	ND (100)	ND (20)	ND (1.0)	ND (20)	ND (10)	ND (20)	ND (5.0)
WW-2	09/18/14	ND (1.0)	ND (100)	ND (20)	ND (1.0)	ND (20)	ND (10)	ND (20)	ND (5.0)
	07/21/17	ND (1.0)	ND (100)	ND (20)	ND (1.0)	ND (20)	ND (10)	ND (20)	ND (5.0)
	01/18/18	ND (1.0)	ND (100)	ND (20)	ND (1.0)	ND (20)	ND (10)	ND (20)	ND (5.0)
	05/05/20	ND (1.0)	ND (100)	ND (20)	ND (1.0)	ND (20)	ND (10)	ND (20)	ND (5.0)
	11/20/20	ND (1.0)	ND (100)	ND (20)	ND (1.0)	ND (20)	ND (10)	ND (20)	ND (5.0)
	07/28/21	ND (1.0)	ND (100)	ND (20)	ND (1.0)	ND (20)	ND (10)	ND (20)	ND (5.0)
	12/13/21	ND (1.0)	ND (100)	ND (20)	ND (1.0)	ND (20)	ND (10)	ND (20)	ND (5.0)
	06/06/22	ND (1.0)	ND (100)	ND (20)	ND (1.0)	ND (20)	ND (10)	ND (20)	ND (5.0)
	12/21/22	ND (1.0)	ND (100)	ND (20)	ND (1.0)	ND (20)	ND (10)	ND (20)	ND (5.0)

Note:

All units expressed in µg/L (PPB)

N/A - Not Applicable

ND () - Not Detected Above Limit of Quantitation (limit in µg/l)

Jash Management LLC, UST Permit #09928
Table 4 – Groundwater Analytical Data (Current & Historical)
 --8 Oxygenates--
 December 21, 2022

Monitor Well ID	Date Sampled	DIPE	Ethanol	ETBA	ETBE	TAA	TAME	TBA	TBF
Action Levels		150	10,000	N/A	47	240	128	1,400	N/A
WW-3	09/18/14	ND (1.0)	ND (100)	ND (20)	ND (1.0)	ND (20)	ND (10)	ND (20)	ND (5.0)
	07/21/17	ND (1.0)	ND (100)	ND (20)	ND (1.0)	ND (20)	ND (10)	ND (20)	ND (5.0)
	01/18/18	ND (1.0)	ND (100)	ND (20)	ND (1.0)	ND (20)	ND (10)	ND (20)	ND (5.0)
	05/05/20	ND (1.0)	ND (100)	ND (20)	ND (1.0)	ND (20)	ND (10)	ND (20)	ND (5.0)
	11/20/20	ND (1.0)	ND (100)	ND (20)	ND (1.0)	ND (20)	ND (10)	ND (20)	ND (5.0)
	07/28/21	ND (1.0)	ND (100)	ND (20)	ND (1.0)	ND (20)	ND (10)	ND (20)	ND (5.0)
	12/13/21	ND (1.0)	ND (100)	ND (20)	ND (1.0)	ND (20)	ND (10)	ND (20)	ND (5.0)
	06/06/22	ND (1.0)	ND (100)	ND (20)	ND (1.0)	ND (20)	ND (10)	ND (20)	ND (5.0)
	12/21/22	ND (1.0)	ND (100)	ND (20)	ND (1.0)	ND (20)	ND (10)	ND (20)	ND (5.0)
WW-4	09/18/14	ND (1.0)	ND (100)	ND (20)	ND (1.0)	ND (20)	ND (10)	ND (20)	ND (5.0)
	07/21/17	ND (1.0)	ND (100)	ND (20)	ND (1.0)	ND (20)	ND (10)	ND (20)	ND (5.0)
	01/17/18	Well not sampled - denied access to property							
	05/05/20	Well not sampled - denied access to property							
	11/20/20	Well not sampled - denied access to property							
	07/28/21	Well not sampled - denied access to property							
	12/13/21	Well not sampled - denied access to property							
	06/06/22	Well not sampled - denied access to property							
	12/21/22	Well not sampled - denied access to property							

Note:

All units expressed in µg/L (PPB)

N/A - Not Applicable

ND () - Not Detected Above Limit of Quantitation (limit in µg/l)

Jash Management LLC, UST Permit #09928
Table 4 – Groundwater Analytical Data (Current & Historical)
 --8 Oxygenates--
 December 21, 2022

Monitor Well ID	Date Sampled	DIPE	Ethanol	ETBA	ETBE	TAA	TAME	TBA	TBF
Action Levels	---	150	10,000	N/A	47	240	128	1,400	N/A
WW-5	09/18/14	ND (1.0)	ND (100)	ND (20)	ND (1.0)	ND (20)	ND (10)	ND (20)	ND (5.0)
	07/21/17	ND (1.0)	ND (100)	ND (20)	ND (1.0)	ND (20)	ND (10)	ND (20)	ND (5.0)
	01/18/18	ND (1.0)	ND (100)	ND (20)	ND (1.0)	ND (20)	ND (10)	ND (20)	ND (5.0)
	05/05/20	ND (1.0)	ND (100)	ND (20)	ND (1.0)	ND (20)	ND (10)	ND (20)	ND (5.0)
	11/20/20	ND (1.0)	ND (100)	ND (20)	ND (1.0)	ND (20)	ND (10)	ND (20)	ND (5.0)
	07/28/21	ND (1.0)	ND (100)	ND (20)	ND (1.0)	ND (20)	ND (10)	ND (20)	ND (5.0)
	12/13/21	ND (1.0)	ND (100)	ND (20)	ND (1.0)	ND (20)	ND (10)	ND (20)	ND (5.0)
	06/06/22	ND (1.0)	ND (100)	ND (20)	ND (1.0)	ND (20)	ND (10)	ND (20)	ND (5.0)
	12/21/22	Well not sampled - well not in service no power to residence							
WW-7	09/18/14	ND (1.0)	ND (100)	ND (20)	ND (1.0)	ND (20)	ND (10)	ND (20)	ND (5.0)
	07/21/17	ND (1.0)	ND (100)	ND (20)	ND (1.0)	ND (20)	ND (10)	ND (20)	ND (5.0)
	01/18/18	ND (1.0)	ND (100)	ND (20)	ND (1.0)	ND (20)	ND (10)	ND (20)	ND (5.0)
	05/05/20	ND (1.0)	ND (100)	ND (20)	ND (1.0)	ND (20)	ND (10)	ND (20)	ND (5.0)
	11/20/20	ND (1.0)	ND (100)	ND (20)	ND (1.0)	ND (20)	ND (10)	ND (20)	ND (5.0)
	07/28/21	ND (1.0)	ND (100)	ND (20)	ND (1.0)	ND (20)	ND (10)	ND (20)	ND (5.0)
	12/13/21	ND (1.0)	ND (100)	ND (20)	ND (1.0)	ND (20)	ND (10)	ND (20)	ND (5.0)
	06/06/22	ND (1.0)	ND (100)	ND (20)	ND (1.0)	ND (20)	ND (10)	ND (20)	ND (5.0)
	12/21/22	ND (1.0)	ND (100)	ND (20)	ND (1.0)	ND (20)	ND (10)	ND (20)	ND (5.0)
WW-8	01/18/18	ND (1.0)	ND (100)	ND (20)	ND (1.0)	ND (20)	ND (10)	ND (20)	ND (5.0)
	05/05/20	Well not sampled - no power to well & the building is currently for sale							
	11/20/20	ND (1.0)	ND (100)	ND (20)	ND (1.0)	ND (20)	ND (10)	ND (20)	ND (5.0)
	07/28/21	ND (1.0)	ND (100)	ND (20)	ND (1.0)	ND (20)	ND (10)	ND (20)	ND (5.0)
	12/13/21	ND (1.0)	ND (100)	ND (20)	ND (1.0)	ND (20)	ND (10)	ND (20)	ND (5.0)
	06/06/22	ND (1.0)	ND (100)	ND (20)	ND (1.0)	ND (20)	ND (10)	ND (20)	ND (5.0)
	12/21/22	ND (1.0)	ND (100)	ND (20)	ND (1.0)	ND (20)	ND (10)	ND (20)	ND (5.0)

Note:

All units expressed in µg/L (PPB)

N/A - Not Applicable

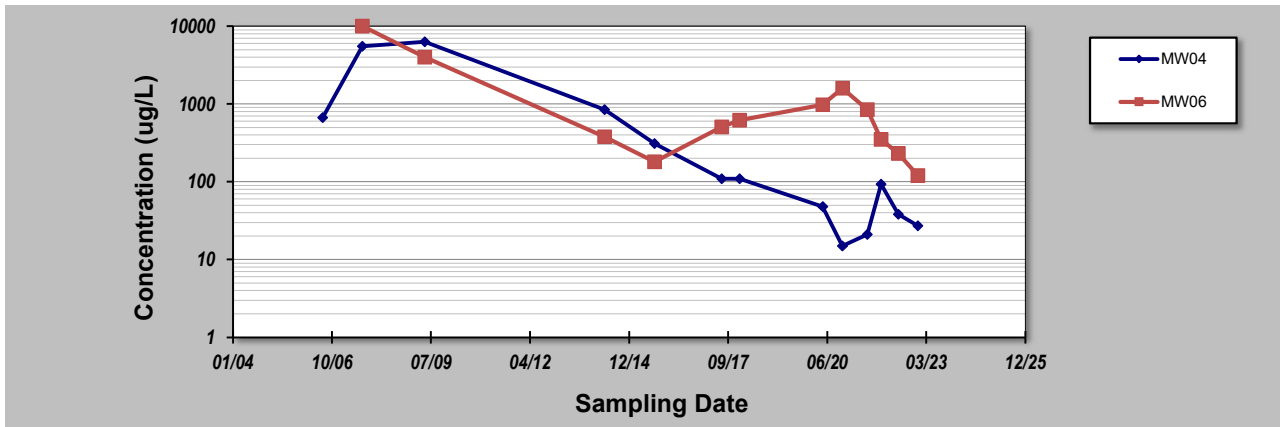
ND () - Not Detected Above Limit of Quantitation (limit in µg/l)

GSI MANN-KENDALL TOOLKIT

for Constituent Trend Analysis

Evaluation Date: **27-Feb-25** Job ID: **UST #09928**
 Facility Name: **JASH MANAGEMENT** Constituent: **BENZENE**
 Conducted By: **ROBERT A. DUNN** Concentration Units: **ug/L**

Sampling Point ID:		MW04	MW06					
Sampling Event	Sampling Date	BENZENE CONCENTRATION (ug/L)						
1	7-Jul-06	670						
2	13-Aug-07	5500	10000					
3	4-May-09	6300	4000					
4	23-Apr-14	840	380					
5	10-Sep-15	310	180					
6	20-Jul-17	110	510					
7	17-Jan-18	110	620					
8	4-May-20	48	980					
9	20-Nov-20	15	1600					
10	29-Jul-21	21	850					
11	13-Dec-21	93	350					
12	6-Jun-22	38	230					
13	21-Dec-22	27	120					
14								
15								
16								
17								
18								
19								
20								
Coefficient of Variation:		1.99	1.72					
Mann-Kendall Statistic (S):		-53	-26					
Confidence Factor:		>99.9%	95.7%					
Concentration Trend:		Decreasing	Decreasing					



Notes:

- At least four independent sampling events per well are required for calculating the trend. *Methodology is valid for 4 to 40 samples.*
- Confidence in Trend = Confidence (in percent) that constituent concentration is increasing ($S > 0$) or decreasing ($S < 0$): $> 95\%$ = Increasing or Decreasing; $\geq 90\%$ = Probably Increasing or Probably Decreasing; $< 90\%$ and $S > 0$ = No Trend; $< 90\%$, $S \leq 0$, and $COV \geq 1$ = No Trend; $< 90\%$ and $COV < 1$ = Stable.
- Methodology based on "MAROS: A Decision Support System for Optimizing Monitoring Plans", J.J. Aziz, M. Ling, H.S. Rifai, C.J. Newell, and J.R. Gonzales, *Ground Water*, 41(3):355-367, 2003.

DISCLAIMER: The GSI Mann-Kendall Toolkit is available "as is". Considerable care has been exercised in preparing this software product; however, no party, including without limitation GSI Environmental Inc., makes any representation or warranty regarding the accuracy, correctness, or completeness of the information contained herein, and no such party shall be liable for any direct, indirect, consequential, incidental or other damages resulting from the use of this product or the information contained herein. Information in this publication is subject to change without notice. GSI Environmental Inc., disclaims any responsibility or obligation to update the information contained herein.

GSI Environmental Inc., www.gsi-net.com

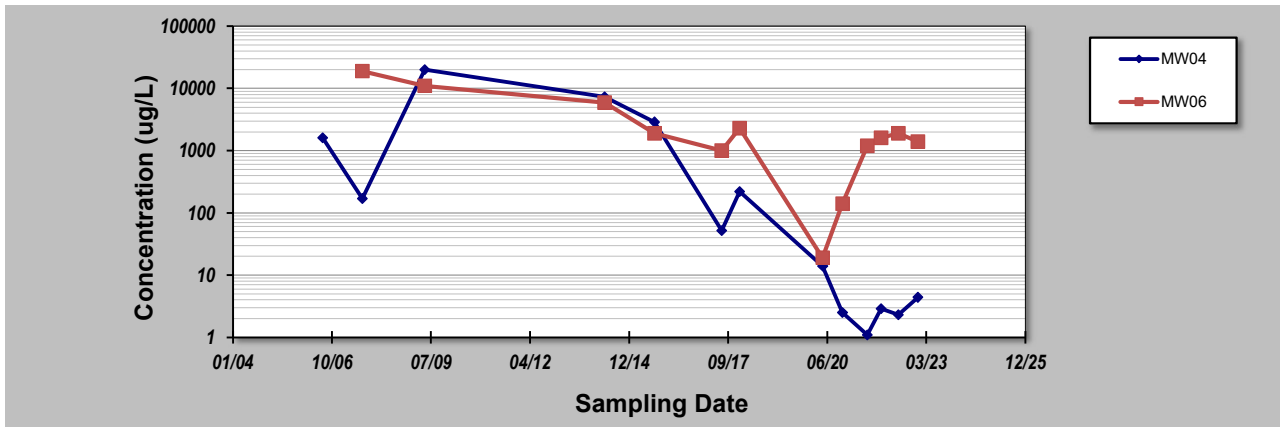
GSI MANN-KENDALL TOOLKIT

for Constituent Trend Analysis

Evaluation Date: **27-Feb-25**
 Facility Name: **JASH MANAGEMENT**
 Conducted By: **ROBERT A. DUNN**

Job ID: **UST #09928**
 Constituent: **TOLUENE**
 Concentration Units: **ug/L**

Sampling Point ID:		MW04	MW06					
Sampling Event	Sampling Date	TOLUENE CONCENTRATION (ug/L)						
1	7-Jul-06	1600						
2	13-Aug-07	170	19000					
3	4-May-09	20000	11000					
4	23-Apr-14	7300	5900					
5	10-Sep-15	2900	1900					
6	20-Jul-17	52	1000					
7	17-Jan-18	220	2300					
8	4-May-20	14	19					
9	20-Nov-20	2.5	140					
10	29-Jul-21	1.1	1200					
11	13-Dec-21	2.9	1600					
12	6-Jun-22	2.3	1900					
13	21-Dec-22	4.4	1400					
14								
15								
16								
17								
18								
19								
20								
Coefficient of Variation:		2.28	1.43					
Mann-Kendall Statistic (S):		-48	-27					
Confidence Factor:		99.9%	96.3%					
Concentration Trend:		Decreasing	Decreasing					



Notes:

- At least four independent sampling events per well are required for calculating the trend. *Methodology is valid for 4 to 40 samples.*
- Confidence in Trend = Confidence (in percent) that constituent concentration is increasing ($S > 0$) or decreasing ($S < 0$): $> 95\%$ = Increasing or Decreasing; $\geq 90\%$ = Probably Increasing or Probably Decreasing; $< 90\%$ and $S > 0$ = No Trend; $< 90\%$, $S \leq 0$, and $COV \geq 1$ = No Trend; $< 90\%$ and $COV < 1$ = Stable.
- Methodology based on "MAROS: A Decision Support System for Optimizing Monitoring Plans", J.J. Aziz, M. Ling, H.S. Rifai, C.J. Newell, and J.R. Gonzales, *Ground Water*, 41(3):355-367, 2003.

DISCLAIMER: The GSI Mann-Kendall Toolkit is available "as is". Considerable care has been exercised in preparing this software product; however, no party, including without limitation GSI Environmental Inc., makes any representation or warranty regarding the accuracy, correctness, or completeness of the information contained herein, and no such party shall be liable for any direct, indirect, consequential, incidental or other damages resulting from the use of this product or the information contained herein. Information in this publication is subject to change without notice. GSI Environmental Inc., disclaims any responsibility or obligation to update the information contained herein.

GSI Environmental Inc., www.gsi-net.com

GSI MANN-KENDALL TOOLKIT

for Constituent Trend Analysis

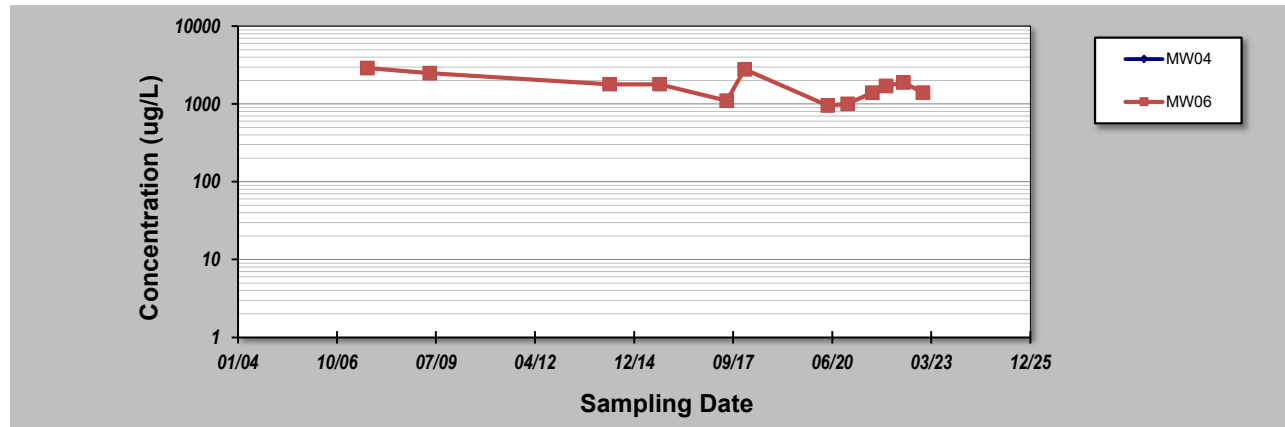
Evaluation Date: **27-Feb-25**
 Facility Name: **JASH MANAGEMENT**
 Conducted By: **ROBERT A. DUNN**

Job ID: **UST #09928**
 Constituent: **ETHYLBENZENE**
 Concentration Units: **ug/L**

Sampling Point ID: **MW04** **MW06**

Sampling Event	Sampling Date	ETHYLBENZENE CONCENTRATION (ug/L)						
1	7-Jul-06							
2	13-Aug-07		2900					
3	4-May-09		2500					
4	23-Apr-14		1800					
5	10-Sep-15		1800					
6	20-Jul-17		1100					
7	17-Jan-18		2800					
8	4-May-20		960					
9	20-Nov-20		1000					
10	29-Jul-21		1400					
11	13-Dec-21		1700					
12	6-Jun-22		1900					
13	21-Dec-22		1400					
14								
15								
16								
17								
18								
19								
20								

Coefficient of Variation:	0.38						
Mann-Kendall Statistic (S):	-20						
Confidence Factor:	90.2%						
Concentration Trend:	Prob. Decreasing						



Notes:

- At least four independent sampling events per well are required for calculating the trend. *Methodology is valid for 4 to 40 samples.*
- Confidence in Trend = Confidence (in percent) that constituent concentration is increasing ($S > 0$) or decreasing ($S < 0$): $> 95\%$ = Increasing or Decreasing; $\geq 90\%$ = Probably Increasing or Probably Decreasing; $< 90\%$ and $S > 0$ = No Trend; $< 90\%$, $S \leq 0$, and $COV \geq 1$ = No Trend; $< 90\%$ and $COV < 1$ = Stable.
- Methodology based on "MAROS: A Decision Support System for Optimizing Monitoring Plans", J.J. Aziz, M. Ling, H.S. Rifai, C.J. Newell, and J.R. Gonzales, *Ground Water*, 41(3):355-367, 2003.

DISCLAIMER: The GSI Mann-Kendall Toolkit is available "as is". Considerable care has been exercised in preparing this software product; however, no party, including without limitation GSI Environmental Inc., makes any representation or warranty regarding the accuracy, correctness, or completeness of the information contained herein, and no such party shall be liable for any direct, indirect, consequential, incidental or other damages resulting from the use of this product or the information contained herein. Information in this publication is subject to change without notice. GSI Environmental Inc., disclaims any responsibility or obligation to update the information contained herein.

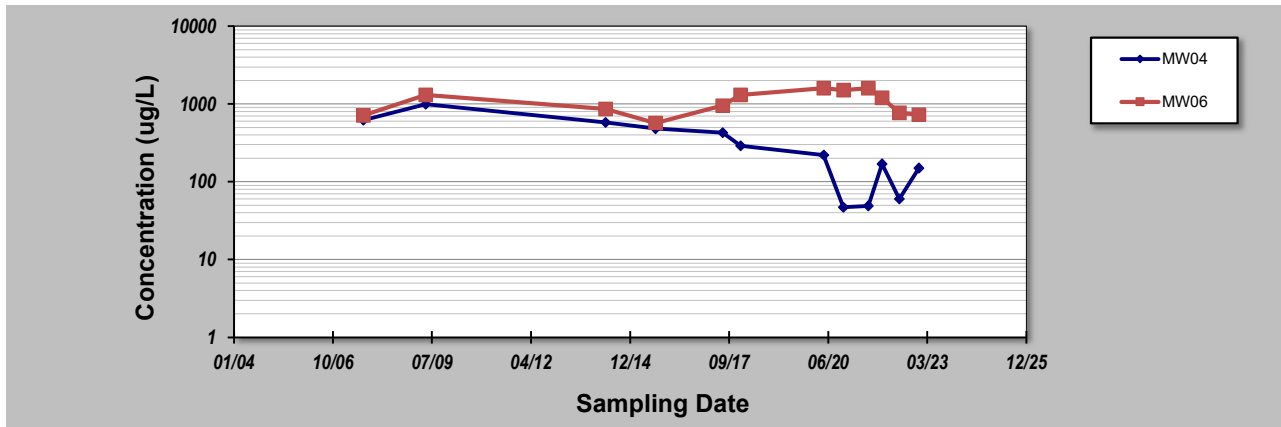
GSI Environmental Inc., www.gsi-net.com

GSI MANN-KENDALL TOOLKIT

for Constituent Trend Analysis

Evaluation Date: **27-Feb-25** Job ID: **UST #09928**
 Facility Name: **JASH MANAGEMENT** Constituent: **NAPHTHALENE**
 Conducted By: **ROBERT A. DUNN** Concentration Units: **ug/L**

Sampling Point ID:		MW04	MW06					
Sampling Event	Sampling Date	NAPHTHALENE CONCENTRATION (ug/L)						
1	7-Jul-06							
2	13-Aug-07	620	710					
3	4-May-09	990	1300					
4	23-Apr-14	580	860					
5	10-Sep-15	480	570					
6	20-Jul-17	430	950					
7	17-Jan-18	290	1300					
8	4-May-20	220	1600					
9	20-Nov-20	47	1500					
10	29-Jul-21	49	1600					
11	13-Dec-21	170	1200					
12	6-Jun-22	60	770					
13	21-Dec-22	150	730					
14								
15								
16								
17								
18								
19								
20								
Coefficient of Variation:		0.85	0.34					
Mann-Kendall Statistic (S):		-48	8					
Confidence Factor:		>99.9%	68.1%					
Concentration Trend:		Decreasing	No Trend					



Notes:

- At least four independent sampling events per well are required for calculating the trend. *Methodology is valid for 4 to 40 samples.*
- Confidence in Trend = Confidence (in percent) that constituent concentration is increasing ($S > 0$) or decreasing ($S < 0$): $>95\%$ = Increasing or Decreasing; $\geq 90\%$ = Probably Increasing or Probably Decreasing; $< 90\%$ and $S > 0$ = No Trend; $< 90\%$, $S \leq 0$, and $COV \geq 1$ = No Trend; $< 90\%$ and $COV < 1$ = Stable.
- Methodology based on "MAROS: A Decision Support System for Optimizing Monitoring Plans", J.J. Aziz, M. Ling, H.S. Rifai, C.J. Newell, and J.R. Gonzales, *Ground Water*, 41(3):355-367, 2003.

DISCLAIMER: The GSI Mann-Kendall Toolkit is available "as is". Considerable care has been exercised in preparing this software product; however, no party, including without limitation GSI Environmental Inc., makes any representation or warranty regarding the accuracy, correctness, or completeness of the information contained herein, and no such party shall be liable for any direct, indirect, consequential, incidental or other damages resulting from the use of this product or the information contained herein. Information in this publication is subject to change without notice. GSI Environmental Inc., disclaims any responsibility or obligation to update the information contained herein.

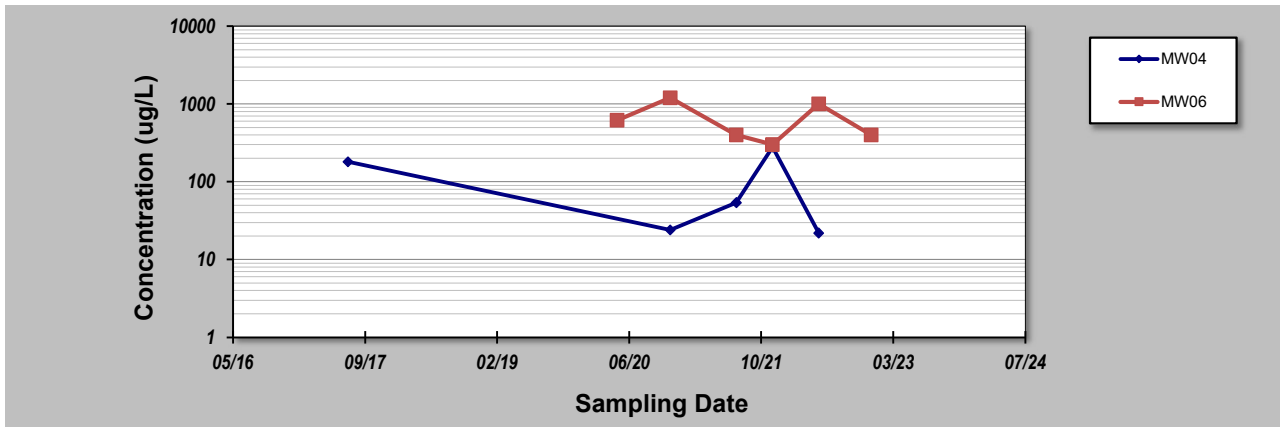
GSI Environmental Inc., www.gsi-net.com

GSI MANN-KENDALL TOOLKIT

for Constituent Trend Analysis

Evaluation Date: **27-Feb-25** Job ID: **UST #09928**
 Facility Name: **JASH MANAGEMENT** Constituent: **TAA**
 Conducted By: **ROBERT A. DUNN** Concentration Units: **ug/L**

Sampling Point ID:		MW04	MW06					
Sampling Event	Sampling Date	TAA CONCENTRATION (ug/L)						
1	20-Jul-17	180						
2	17-Jan-18							
3	4-May-20		620					
4	20-Nov-20	24	1200					
5	29-Jul-21	54	400					
6	13-Dec-21	280	300					
7	6-Jun-22	22	1000					
8	21-Dec-22		400					
9								
10								
11								
12								
13								
14								
15								
16								
17								
18								
19								
20								
Coefficient of Variation:		1.02	0.56					
Mann-Kendall Statistic (S):		-2	-4					
Confidence Factor:		59.2%	70.3%					
Concentration Trend:		No Trend	Stable					



Notes:

- At least four independent sampling events per well are required for calculating the trend. *Methodology is valid for 4 to 40 samples.*
- Confidence in Trend = Confidence (in percent) that constituent concentration is increasing ($S > 0$) or decreasing ($S < 0$): $> 95\%$ = Increasing or Decreasing; $\geq 90\%$ = Probably Increasing or Probably Decreasing; $< 90\%$ and $S > 0$ = No Trend; $< 90\%$, $S \leq 0$, and $COV \geq 1$ = No Trend; $< 90\%$ and $COV < 1$ = Stable.
- Methodology based on "MAROS: A Decision Support System for Optimizing Monitoring Plans", J.J. Aziz, M. Ling, H.S. Rifai, C.J. Newell, and J.R. Gonzales, *Ground Water*, 41(3):355-367, 2003.

DISCLAIMER: The GSI Mann-Kendall Toolkit is available "as is". Considerable care has been exercised in preparing this software product; however, no party, including without limitation GSI Environmental Inc., makes any representation or warranty regarding the accuracy, correctness, or completeness of the information contained herein, and no such party shall be liable for any direct, indirect, consequential, incidental or other damages resulting from the use of this product or the information contained herein. Information in this publication is subject to change without notice. GSI Environmental Inc., disclaims any responsibility or obligation to update the information contained herein.

GSI Environmental Inc., www.gsi-net.com

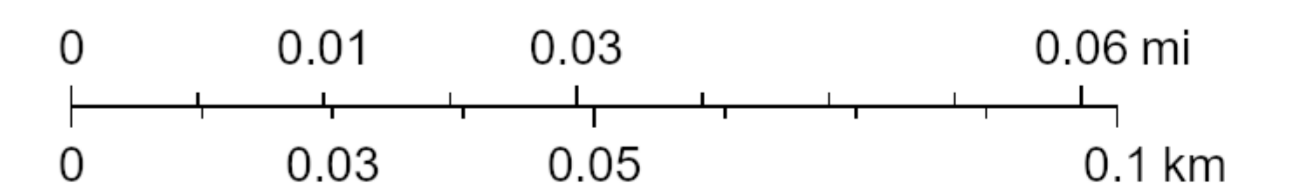
Tax Map Number	Property Address	Property Owner Name
90002-01-029	2819 W PALMETTO ST	PRIYANA LLC
90002-01-027	823 S ST CLAIRE DR	FLORENCE COUNTY
90002-01-031	2811 W PALMETTO ST	P D PALMETTO LLC
90002-01-014	2823 W PALMETTO ST	BROWN MARY EUNICE
90002-01-019	822 S ST CLAIRE DR	MR. & MRS. SANSBURY
90002-01-018	818 S ST CLAIRE DR	MCALLISTER WILLIAM M JR
90002-01-024	827 S BOTANY DR	NATHAN & SYDNEY COX
90002-01-023	833 S BOTANY DR	ELLA ANDERSON
90002-01-022	2803 W PALMETTO ST	J MADISON RAINWATER

ArcGIS Web Map



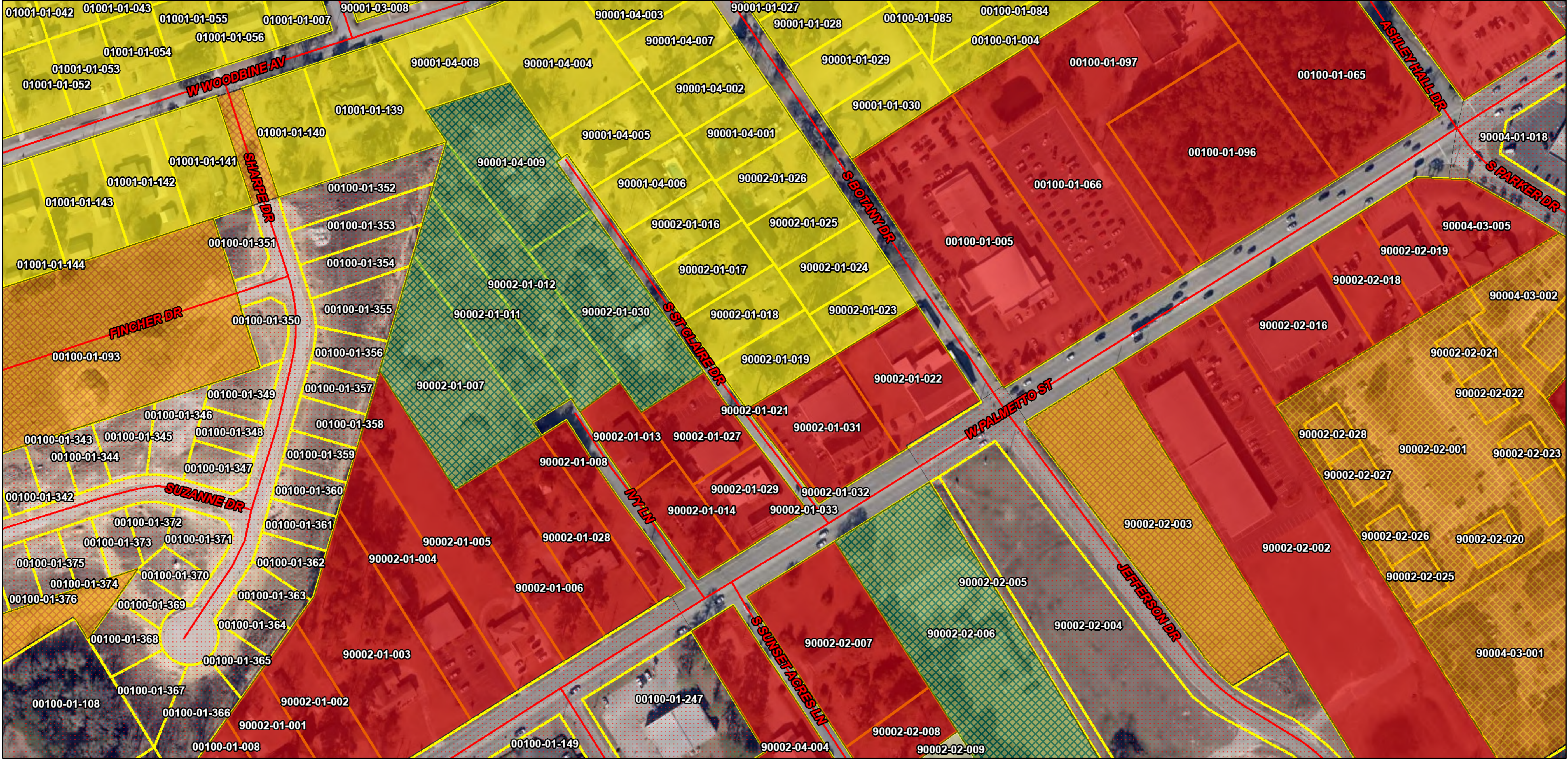
5/1/2025, 4:03:49 PM

1:1,587










Imagery collected in 2023 by Kucera International. Imagery is managed by Adam DeMars, South Carolina State GIS Coordinator and hosted by Esri., Sources: Esri, TomTom, Garmin, FAO, NOAA, USGS, © OpenStreetMap contributors, and the GIS User




ArcGIS Web Map

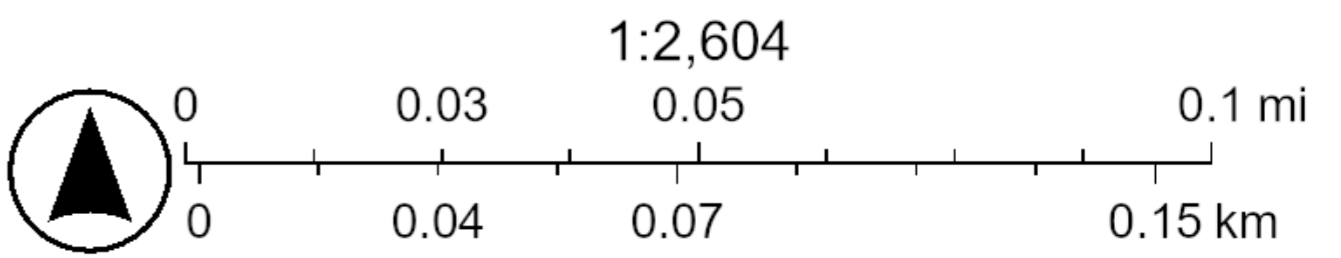


5/1/2025, 4:08:40 PM

 Roads
  B-3
  R-2
  RU-1A

Zoning
  PD
  R-3A
  Parcels

 CITY ZONING
  R-1
  R-5A



Imagery collected in 2023 by Kucera International. Imagery is managed by Adam DeMars, South Carolina State GIS Coordinator and hosted by Esri., Maxar, Microsoft